

# ViSAGE®

TITANIUM SERIES

## VESATILE STYLING **WET & DRY** **SHAVER**



Model Number: AP210262

Product Number: 717390

## USER GUIDE

Version 1.0 - Issued 13/05/24



# Welcome

Congratulations on choosing to buy a Visage® product. All products brought to you by Visage® are manufactured to the highest standards of performance and safety, and, as part of our philosophy of customer service and satisfaction, are backed by our comprehensive 1 Year Warranty.

We hope you will enjoy using your purchase for many years to come.

---

## AFTER SALES SUPPORT



AUS 1300 663 907

[customercare@balcobrands.com](mailto:customercare@balcobrands.com)

MODEL: AP210262 PRODUCT CODE: 717390 12/2024

**1**


**YEAR WARRANTY**

# Contents

<b>Welcome</b>	<b>2</b>
<b>Warranty Details</b>	<b>4</b>
<b>General Information &amp; Safety Instructions</b>	<b>6</b>
<b>Features</b>	<b>7</b>
<b>Technical Specifications</b>	<b>7</b>
<b>Assembly &amp; Parts List</b>	<b>8</b>
<b>Getting Started</b>	<b>9</b>
Before first use	9
Charging the battery	9
Optimising the life of the rechargeable batteries	9
<b>Operation</b>	<b>9</b>
Shaving	9
<b>Storage</b>	<b>11</b>
<b>Cleaning &amp; Maintenance</b>	<b>11</b>
<b>Disposal</b>	<b>11</b>
<b>FAQ</b>	<b>12</b>
<b>Repair and Refurbished Goods or Parts Notice</b>	<b>13</b>
<b>Notes</b>	<b>14</b>

---

## AFTER SALES SUPPORT

 **AUS** 1300 663 907

[customercare@balcobrands.com](mailto:customercare@balcobrands.com)

MODEL: AP210262 PRODUCT CODE: 717390 12/2024





**ViSAGE®**

**WET & DRY SHAVER**

# Warranty Details

---

REGISTER YOUR PURCHASE AT [www.aldi.com.au/en/about-aldi/product-registration/](http://www.aldi.com.au/en/about-aldi/product-registration/) TO  
KEEP UP-TO-DATE WITH IMPORTANT PRODUCT INFORMATION

---

The product is guaranteed to be free from defects in workmanship and parts for a period of 12 months from the date of purchase. Defects that occur within this warranty period, under normal use and care, will be repaired, replaced or refunded at our discretion. The benefits conferred by this warranty are in addition to all rights and remedies in respect of the product that the consumer has under the Competition and Consumer Act 2010 and similar state and territory laws.

Our goods come with guarantees that cannot be excluded under the Australian Consumer Law. You are entitled to a replacement or refund for a major failure and for compensation for any other reasonably foreseeable loss or damage. You are also entitled to have the goods repaired or replaced if the goods fail to be of acceptable quality and the failure does not amount to a major failure.

---

**AFTER SALES SUPPORT**

 **AUS** 1300 663 907

[customercare@balcobrands.com](mailto:customercare@balcobrands.com)

MODEL: AP210262 PRODUCT CODE: 717390 12/2024



## Warranty Note

**If you experience any issues with this product, or its performance is not what you had expected, please contact us at Balco Brands**

**It is likely that we can resolve any problems for you via phone or email.**

**We can be reached on:**

**Phone: 1300 663 907**

**(Mon - Fri; 8:30am - 6:00pm EST)**

**Email: [customercare@balcobrands.com](mailto:customercare@balcobrands.com)**

**Web: [www.balcobrands.com](http://www.balcobrands.com)**

# General Information & Safety Instructions

Read this manual thoroughly before first use and keep it in a safe place for future reference, along with warranty card, purchase receipt and packaging. The safety precautions enclosed herein reduce the risk of fire, electric shock and injury when correctly adhered to.

Follow all instructions and take notice of all warnings to reduce risk of fire or electric shock.

- This product is intended for indoor domestic use and is not intended for commercial, trade or industrial applications.
- This appliance is not intended for use by persons (including children) with reduced physical, sensory or mental capabilities, or lack of experience and knowledge, unless they have been given supervision or instruction concerning use of the appliance by a person responsible for their safety. Children should be supervised to ensure that they do not play with the appliance. Always read all instructions before using the appliance.
- Keep the appliance and USB charging cable away from heat sources and hot surfaces.
- Always protect the USB charging cable from undue flexing and wearing – do not allow the cable to hang off edge of the counter or table.
- Do not operate with aerosol spray products or where oxygen is being administered.
- Only for use on facial hair.
- Do not use if there is any damage to the blades or tracks as it may cause injury.
- Do not insert any object into any opening in the appliance.
- Do NOT use the appliance in the shower if it is plugged in.
- Do not use in dusty conditions.
- Do not place or store the appliance where it can fall or be pulled into a sink or bath.
- Do not drop the appliance. Dropping or rough use of the unit may cause damage.
- Do not place near strong magnets or strong electric currents.
- Unless charging, always unplug this appliance from the power point immediately after use and after charging.
- Unplug the appliance before cleaning.
- If the appliance is not in use, turn off and unplug from any power source.
- Do not attempt to repair, open or alter any components of the appliance. In the case of improper usage or if you have opened, altered and repaired the product yourself, all guarantees are void.
- The supplier does not accept responsibility for additional or consequential damage other than covered by legal product responsibility.
- Do not use the appliance for other than intended or specified purposes.
- The supplier is not responsible for the end use of this product including any improper use or when used for purposes that are not specified.
- The appliance contains a battery that is only replaceable by a skilled person.
- **WARNING:** Detach the appliance from the supply cord before cleaning it in water.
- The product must only be supplied at safety extra low voltage corresponding to the marking on the appliance.
- The supply terminals are not to be short-circuited.
- Only to be used together with an AS/NZS 60335 certified power supply with 5V/5W SELV. For charging information please refer to the section labelled 'Charging the battery'
- This appliance contains a battery that is non-replaceable. When the battery is at the end of its life, the appliance shall be properly disposed of.
- Dispose of used batteries to local regulations properly.
- Do not expose the appliance or battery to excessive temperatures.
- Be aware of the risk of terminal of the battery operated appliance or battery being short circuited by metal objects.
- Do not expose battery to heat or fire. Avoid storage in direct sunlight.
- In the event of a battery leaking, do not allow the liquid to come in contact with skin or eyes. If contact has been made, wash the affected area with copious amounts of water and seek medical advice.
- The water resistance rating of the shaver is IPX6, which means it is suitable for cleaning under an open water tap.



Suitable for cleaning under an open water tap

This product complies with AS/NZS 60335.1 and AS/NZS 60335.2.8

## AFTER SALES SUPPORT



AUS 1300 663 907

customercare@balcobrands.com

1

YEAR WARRANTY

# Features

- Triple shaving technology - Two flexible foils for close shaving
- Inbuilt shaving technology pre-trims longer hairs for a close shave
- Digital LED display - Safety/travel lock, low battery indicator
- Wet or dry use - use with gels, foams or even in the shower
- Water resistance rating: IPX6
- Pop up trimmer
- 60 minute run time
- 90 minute charge time

# Technical Specifications

Model Specification:	AP210262
Warranty:	1 Year
Battery:	600mAh
Battery type:	Li-ion cell
Power system:	Cordless (rechargeable)
Power:	5W
Rated input:	DC 5V 1A
Dimensions:	16.2 x 6.2 x 4.2cm

---

## AFTER SALES SUPPORT

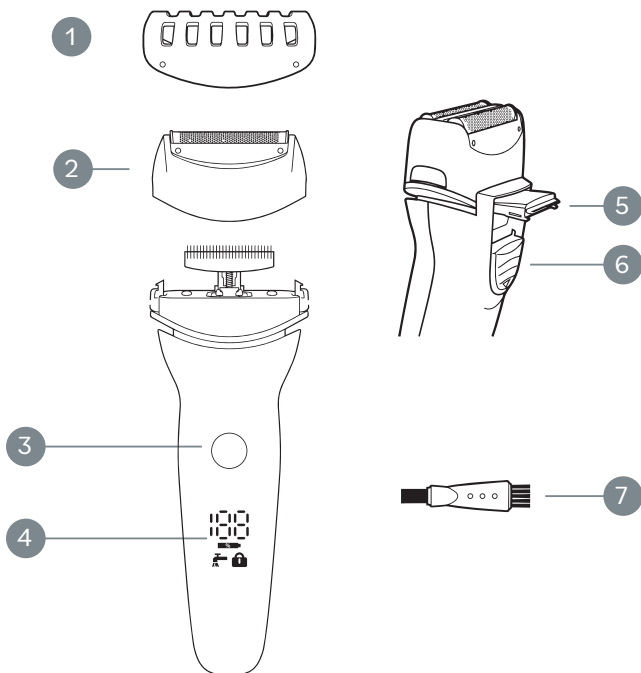
 **AUS** 1300 663 907

[customercare@balcobrands.com](mailto:customercare@balcobrands.com)

MODEL: AP210262 PRODUCT CODE: 717390 12/2024



# Assembly & Parts List



1. Protective cap
2. Shaver head
3. ON/OFF switch
4. LED display

5. Pop up trimmer
6. Trimmer slide
7. Cleaning brush
8. Premium case\*

9. USB-C charging cable\*
10. User guide\*
11. Warranty card\*

\* Not pictured

## AFTER SALES SUPPORT

 **AUS** 1300 663 907

[customercare@balcobrands.com](mailto:customercare@balcobrands.com)

MODEL: AP210262 PRODUCT CODE: 717390 12/2024





# Getting Started

## Before first use

Remove any packaging material and promotional labels before using your shaver for the first time. Fully unwind the USB-C power cord and inspect it for damage. Do not use the appliance if any part has been damaged. In case of damage, contact our after sales support line for advice on replacement or return.

## Charging the battery

- Before using your foil shaver for the first time, charge it fully for 90 minutes
- Plug the USB charging cord into your foil shaver and then plug one end into a USB-C power source (not included). Please ensure that the foil shaver is OFF. The LED display will indicate the amount of charge in the foil shaver, once it displays 100% this means it is fully charged

**NOTE:** When the foil shaver is charging, the battery symbol on the LED screen will begin to blink. This will stop once the foil shaver has been charged

**NOTE:** When the battery capacity is less than 5%, the battery symbol will begin to blink to remind you to charge the foil shaver

## Optimising the life of the rechargeable batteries

- Discharge the rechargeable batteries completely twice a year by letting the motor run until it stops. Then fully recharge the batteries

# Operation

## Shaving

Initial use of the foil shaver may involve an adjustment period for your face as it gets used to a foil shaver. If changing from manual shaving this may be more noticeable as the technique and cutting style is different. Allow 2-4 weeks to adjust to this method.

With wet shaving, you soak the area to be shaved in warm water, apply some foam or gel on the area, and run your shaver on it. This helps to achieve the closest shave possible.

Dry shaving is using the shaver without using water or shaving gels. Shaving result will not be as smooth as wet shaving.

## Foil shaver

1. Remove the protective cap.
2. Turn the shaver on by pressing the ON/OFF button once.
3. The LED display will illuminate, indicating the percentage of charge remaining.

**NOTE:** If your shaver does not turn on, the battery may be discharged. Follow the charging instructions above.

4. With the shaver at a 90° angle to your face, stretch the skin and shave the desired area.

**WARNING:** Do not open shaving head when unit is turned on.

---

## AFTER SALES SUPPORT

 **AUS** 1300 663 907

customercare@balcobrands.com

MODEL: AP210262 PRODUCT CODE: 717390 12/2024

# Getting Started

5. Press the ON/OFF button to turn the shaver off when finished.

## Pop up trimmer

The shaver comes equipped with a handy beard trimmer to tackle difficult hairs or side burns.

1. Remove the protective cap.
2. Turn the shaver on by pressing the ON/OFF button once.
3. The charge display will illuminate.
4. Push the trimmer slide down to pop up the trimmer.

**NOTE:** *The head will continue operating when the beard trimmer is engaged.*

5. With the trimmer at a 90° angle to your face stretch the skin and gently shave desired area.
6. Press the trimmer back down when finished.
7. Press the ON/OFF button to turn the shaver off

---

## AFTER SALES SUPPORT

 **AUS** 1300 663 907

[customercare@balcobrands.com](mailto:customercare@balcobrands.com)

MODEL: AP210262 PRODUCT CODE: 717390 12/2024



# Storage

- When not in use, unplug the appliance and store out of reach of children in a safe, dry location. Never wrap the cord around the appliance as this will cause the cord to wear prematurely and break. Handle the cord carefully, and avoid jerking, twisting or straining especially at plug connection
- To lock/unlock the foil shaver when storing press the ON/OFF switch for 3 seconds. The lock indicator on the screen will blink 3 times

# Cleaning & Maintenance

Before cleaning the appliance ensure it is turned off and unplugged from the power outlet.

LIGHTLY RINSE THE APPLIANCE HEAD UNDER RUNNING WATER. ALLOW TO AIR DRY AS USING A TOWEL MAY DAMAGE THE BLADES. NEVER USE COMPRESSED AIR, SCOURING PADS, ABRASIVE CLEANING AGENTS OR AGGRESSIVE LIQUIDS SUCH AS ALCOHOL, PETROL OR ACETONE TO CLEAN THE APPLIANCE. DO NOT USE ANY SHARP OBJECTS TO CLEAN THE APPLIANCE.

To maintain optimum performance, the appliance should be cleaned after each use:

- Using the cleaning brush, brush and blow away any remaining hair from the blades and from the neck
- Do not disassemble the appliance
- Clean the appliance after every use

# Disposal

At the end of its working life, do not throw this product out with your household rubbish. Electrical and electronic products contain substances that can have a detrimental effect on the environment and human health if disposed of inappropriately. Observe any local regulations regarding the disposal of electrical consumer goods and dispose of it appropriately for recycling. Contact your local authorities for advice on recycling facilities in your area.

Please keep the original packaging carton and materials in a safe place. It will help to prevent any damage if the product needs to be transported in the future. In the event it is to be disposed of, please recycle all packaging material where possible.

If you require another copy of this instruction manual, please contact [customercare@balcobrands.com](mailto:customercare@balcobrands.com) to obtain an electronic copy.

---

## AFTER SALES SUPPORT

  1300 663 907

[customercare@balcobrands.com](mailto:customercare@balcobrands.com)

MODEL: AP210262 PRODUCT CODE: 717390 12/2024

**1**

YEAR WARRANTY

# FAQ

Problem	Solution
Why isn't my shaver turning on?	<ul style="list-style-type: none"><li>• Ensure the battery is fully charged, see <b>Charging the Battery</b> on page 9 for reference</li></ul>
What does the LED display show?	<ul style="list-style-type: none"><li>• Displays battery life &amp; safety lock</li></ul>
How long does it take to charge?	<ul style="list-style-type: none"><li>• It takes approximately 90 minutes to fully charge. LED display will indicate '100' which means it is fully charged</li></ul>
Why is there a lock symbol on my shaver?	<ul style="list-style-type: none"><li>• This means the shaver is locked. Please press and hold the power button for 3 seconds and the shaver will turn on</li></ul>

---

## AFTER SALES SUPPORT

 **AUS** 1300 663 907

[customercare@balcobrands.com](mailto:customercare@balcobrands.com)

MODEL: AP210262 PRODUCT CODE: 717390 12/2024





ViSAGE®

WET & DRY SHAVER

# Repair and Refurbished Goods or Parts Notice

---

Unfortunately, from time to time, faulty products are manufactured which need to be returned to the Supplier for repair.

Please be aware that if your product is capable of retaining user-generated data (such as files stored on a computer hard drive, telephone numbers stored on a mobile telephone, songs stored on a portable media player, games saved on a games console or files stored on a USB memory stick) during the process of repair, some or all of your stored data may be lost.

**We recommend you save this data elsewhere prior to sending the product for repair.**

You should also be aware that rather than repairing goods, we may replace them with refurbished goods of the same type or use refurbished parts in the repair process.

**Please be assured though, refurbished parts or replacements are only used where they meet ALDI's stringent quality specifications.**

If at any time you feel your repair is being handled unsatisfactorily, you may escalate your complaint. Please telephone us on 1300 663 907 or write to us at:

Balco Brands Pty Ltd

PO Box 537 Bayswater Business Centre, Victoria, Australia

1300 663 907 - Hours: Mon-Fri 8:30am - 6:00pm AEST

[customer-care@balcobrands.com](mailto:customer-care@balcobrands.com)

---

#### AFTER SALES SUPPORT

 **AUS** 1300 663 907

[customer-care@balcobrands.com](mailto:customer-care@balcobrands.com)

MODEL: AP210262 PRODUCT CODE: 717390 12/2024

13

1

YEAR WARRANTY



ViSAGE<sup>®</sup>

TITANIUM SERIES