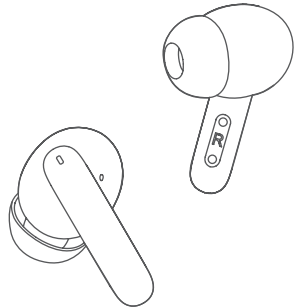


BAUHN®

NOISE CANCELLING

TRUE WIRELESS EARBUDS



USER GUIDE

CE220756
04/2025

SAFETY WARNINGS

- Only use attachments/accessories specified by the manufacturer
 - To avoid accidental ingestion, keep the earbuds away from children and pets
 - The earbuds contain a lithium-ion battery, and may be hazardous if swallowed
 - If ingested, seek immediate medical attention
 - When not in use, store the earbuds in the charging case with the lid closed, and keep out of reach of children and pets
 - Do NOT use the earbuds at a high volume for any extended period
 - To avoid hearing damage, use your earbuds at a comfortable, moderate volume level
 - Turn the volume down on your device before placing the earbuds in/on your ears, then turn the volume up gradually until you reach a comfortable listening level
 - Use caution and follow applicable laws regarding mobile phone and headphone use if using the earbuds for phone calls while driving
 - Some jurisdictions impose specific limitations, such as single earpiece configuration, on the use of such products while driving
 - DON'T use the earbuds for any other purpose while driving
 - Focus on your safety and that of others if you use the earbuds while engaging in any activity requiring your attention, e.g., while riding a bicycle or walking in or near traffic, a construction site or railroad and follow applicable laws regarding headphone use, etc.
 - Remove the earbuds or adjust your volume to ensure you can hear surrounding sounds, including alarms and warning signals
 - Do NOT allow children to use the earbuds
 - Do NOT submerge or expose the earbuds for an extended period to water, or wear while participating in water sports, e.g., swimming, water-skiing, surfing, etc
 - To reduce the risk of injury, close supervision is necessary when the charging case is used near children
 - Do not expose charging case to water, rain, liquids or snow
 - Do not use the charging case in excess of its output rating
 - Do not use a charging case that is damaged or modified. Damaged or modified batteries may exhibit unpredictable behaviour resulting in fire, explosion or risk of injury to persons
 - Do not disassemble the charging case. Incorrect reassembly may result in risk of fire or injury to persons
 - Do not open, crush, or expose a charging case to fire, or excessive temperature. Exposure to fire or temperature above 45°C may cause explosion
 - Have servicing performed by a qualified repair person using only identical replacement parts
 - Do NOT make unauthorized alterations to this product
 - Use this product only with an agency approved power supply which meets local regulatory requirements (e.g., RCM)
 - Wipe off sweat from the earbuds and the charging case before charging
 - This product contains magnetic material. Consult your physician on whether this might affect your implantable medical device
 - Excessive sound pressure from earphones and headphone can cause hearing loss
 - Attention should be drawn to the environmental aspects of battery disposal
 - Use only with charger cable provided with the earbuds
 - Use of apparatus in moderate climates
 - This product shall not be connected to power supply source exceeding PS1. 5V d.c. 15W.
- CAUTION: Risk of explosion:**
- If the battery is replaced by an incorrect type.
 - If the battery is subjected to high or low extreme temperatures that a battery can be subjected to during use, storage or transportation.
 - If the battery is subjected to low air pressure at high altitude.
 - Replacement of a battery with an incorrect type that can defeat a safeguard (for example, in the case of some lithium battery types).
 - Disposal of a battery into fire or a hot oven, or mechanically crushing or cutting of a battery, that can result in an explosion.
 - Leaving a battery in an extremely high temperature surrounding environment that can result in an explosion or the leakage of flammable liquid or gas.
 - A battery subjected to extremely low air pressure that may result in an explosion or the leakage of flammable liquid or gas.



BAUHN®

TRUE WIRELESS EARBUDS

Warranty Details

REGISTER YOUR PURCHASE AT www.aldi.com.au/en/about-aldi/product-registration/ TO KEEP UP-TO-DATE WITH IMPORTANT PRODUCT INFORMATION

The product is guaranteed to be free from defects in workmanship and parts for a period of 12 months from the date of purchase. Defects that occur within this warranty period, under normal use and care, will be repaired, replaced or refunded at our discretion. The benefits conferred by this warranty are in addition to all rights and remedies in respect of the product that the consumer has under the Competition and Consumer Act 2010 and similar state and territory laws.

Our goods come with guarantees that cannot be excluded under the Australian Consumer Law. You are entitled to a replacement or refund for a major failure and for compensation for any other reasonably foreseeable loss or damage. You are also entitled to have the goods repaired or replaced if the goods fail to be of acceptable quality and the failure does not amount to a major failure.

AFTER SALES SUPPORT

1300 663 907

customercare@balcobrands.com

MODEL: CE220756 PRODUCT CODE: 719264 04/2025

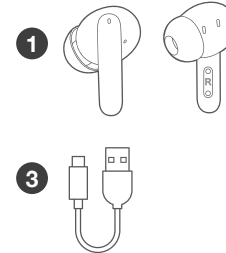
1

YEAR WARRANTY

IN THE BOX

1. 1 x Noise Cancelling True Wireless Earbuds
2. 1 x Earbud Charging Case
3. 1 x USB Charging Cable
4. 3 x Pairs Of Silicone Eartips
5. 1 x User Guide*
6. 1 x Warranty Certificate*

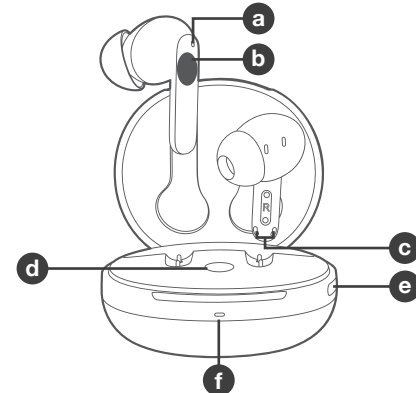
*Not pictured



FUNCTIONS

- a. Earbud Indicator LED Light
- b. Smart Control Area
- c. Microphone
- d. Charging Case Button
- e. Charging Port
- f. Charging Case Indicator LED Light

Note: Product rating label is inside the charging case



CHARGING

- Charging case**
1. Connect the USB C end of the supplied USB C charging cable into the charging case charging port
 2. Connect the USB end of the charging cable into PC or AC/DC wall adaptor (not provided)
 3. While charging, the charging case indicator LED light will illuminate red. When fully charged, the charging case indicator LED light will illuminate white.

Earbuds

The earbuds will start charging when put back into the charging case. You can check whether or not the earbuds are fully charged or not by opening up the charging case while the earbuds are placed inside. The LED light on the back of the earbuds will be red while charging & will turn white for 30 seconds once fully charged.

Note: The LED light will turn off after 10 seconds

Certain mobile devices will also display an on-screen headset battery indicator while the headphones are connected

TURNING ON/OFF

- Turning on**
- Open the charging case, the earbuds will power on automatically. Take both earbuds out from the charging case, they will turn on and connect with each other automatically
- Turning off**
- Put the earbuds back into the charging case and close completely, they will turn off automatically

PAIRING

- Connect a device**
1. Remove the earbuds from the charging case, the earbud indicator light will begin flashing white to signify pairing mode
 2. Enable Bluetooth on your device and select “CE220756” from the list to connect
 3. Your device will show if it is connected successfully
- Multi-Point Connection**
1. After connecting the first device, turn off the Bluetooth on the connected device.
 2. Repeat the process of connecting a device with the second device you would like to pair
 3. Turn on the Bluetooth on the first connected device and select “CE220756”, both devices should now be connected

SMART CONTROL AREA

You can control a variety of different functions on your mobile device using the smart control area on your earbuds

Play/Pause Music	Double tap on the smart control area on either earbud
Next Track	Triple tap the smart control area on the right earbud
Answer/End Call	Double tap the smart control area
Reject Incoming Call	Press and hold the smart control area for 2 seconds when a call is incoming
Activate Voice Assistant	Triple tap the smart control area on the left earbud and exit with the same operation
Low Latency Mode	Press and hold the smart control area on the left earbud for 3 seconds
ANC Modes	Press and hold the smart control area on the right earbud for 3 seconds to switch between ANC ON, ANC OFF and TRANSPARENCY modes

FACTORY RESET

Put the earbuds into the charging case and keep the case open. Press and hold the charging case button for 10 seconds or until the indicator light flashes 5 times. All the pairing history will be cleared off

Note: Once earbuds have been factory reset, you will need to connect your earbuds to your device again

TECH SPECS

Bluetooth version: V5.4
Earbuds playtime: 7 hours playtime at 50% volume (ANC off)
Earbud battery: 45mAh
Wireless distance: 10m
Charging case battery: 380mAh
Power Input: DC 5V 500mA
Earbuds Water Resistant: IPX4 (Not including charging case)

Note: Product rating label is inside the charging case

AFTER SALES SUPPORT

Phone number: 1300 663 907
customer@baldobrand.com



BAUHN®

TRUE WIRELESS EARBUDS

Repair and Refurbished Goods or Parts Notice

Unfortunately, from time to time, faulty products are manufactured which need to be returned to the Supplier for repair.

Please be aware that if your product is capable of retaining user-generated data (such as files stored on a computer hard drive, telephone numbers stored on a mobile telephone, songs stored on a portable media player, games saved on a games console or files stored on a USB memory stick) during the process of repair, some or all of your stored data may be lost.

We recommend you save this data elsewhere prior to sending the product for repair.

You should also be aware that rather than repairing goods, we may replace them with refurbished goods of the same type or use refurbished parts in the repair process.

Please be assured though, refurbished parts or replacements are only used where they meet ALDI's stringent quality specifications.

If at any time you feel your repair is being handled unsatisfactorily, you may escalate your complaint. Please telephone us on 1300 663 907 or write to us at:

Balco Brands Pty Ltd
PO Box 537 Bayswater Business Centre, Victoria, Australia
1300 663 907 - Hours: Mon-Fri 8:30am - 6:00pm AEST
customer@baldobrand.com

AFTER SALES SUPPORT
customer@baldobrand.com
1300 663 907
MODEL: CE220756 PRODUCT CODE: 719264 04/2025

