



2 Slice Toaster

Model Number TDB800

INSTRUCTION MANUAL

AFTER SALES SUPPORT

  1300 663 907

 customercare@winplus.com.au

MODEL: TDB800 PRODUCT CODE: 46770 10/2014





Contents

- 03 Warranty Page**
- 04 Welcome**
- 05 General Information and Safety Instructions**
- 08 Assembly and Parts List**
- 09 Getting Started**
- 10 Features & Technical Specifications**
- 12 Cleaning and Storage**
- 13 FAQ**
- 14 Index**
- 15 Repair and Refurbished Goods or Parts Notice**





Warranty Details



2 Slice Toaster

The product is guaranteed to be free from defects in workmanship and parts for a period of 36 months from the date of purchase. Defects that occur within this warranty period, under normal use and care, will be repaired, replaced or refunded at our discretion.

The benefits conferred by this warranty are in addition to all rights and remedies in respect of the product that the consumer has under the Competition and Consumer Act 2010 and similar state and territory laws.

Our goods come with guarantees that cannot be excluded under the Australian Consumer Law. You are entitled to a replacement or refund for a major failure and for compensation for any other reasonably foreseeable loss or damage. You are also entitled to have the goods repaired or replaced if the goods fail to be of acceptable quality and the failure does not amount to a major failure.

AFTER SALES SUPPORT

  1300 663 907

 customercare@winplus.com.au

MODEL: TDB800 PRODUCT CODE: 46770 10/2014







Welcome

Congratulations on choosing to buy a Kuchef® product.

All products brought to you by Kuchef® are manufactured to the highest standards of performance and safety, and, as part of our philosophy of customer service and satisfaction, are backed by our comprehensive 3 Year Warranty.

We hope that you will enjoy using your purchase for many years to come.

AFTER SALES SUPPORT

  1300 663 907

 customercare@winplus.com.au

MODEL: TDB800 PRODUCT CODE: 46770 10/2014



General Information and Safety Instructions

GENERAL INFORMATION & SAFETY INSTRUCTIONS

- Do not use in dusty conditions.
- Do not drop the toaster. Dropping or rough use of the unit will cause damage.
- Do not place near strong magnets or strong electric currents.
- If the toaster is not in use, turn off and unplug from any power source.
- Do not attempt to repair, open or alter any components of the toaster. In the case of improper usage or if you have opened, altered and repaired the product yourself, all guarantees are void.
- The supplier does not accept responsibility for additional or consequential damage other than covered by legal product responsibility.
- The supplier is not responsible for the end use of this product including any improper use or when used for purposes that are not specified.

AFTER SALES SUPPORT

  1300 663 907

 customercare@winplus.com.au

MODEL: TDB800 PRODUCT CODE: 46770 10/2014

Warnings

1. Read all instructions before operating the toaster for the first time.
2. This appliance is intended to be used in household and similar applications such as:
 - staff kitchen areas in shops, offices and other working environments;
 - farm houses;
 - by clients in hotels, motels and other residential type environments; bed and breakfast type environments.
3. Do not use the appliance for other than intended or specified purposes.
4. Only use the toaster with Australian Standard 220-240V AC 50/60Hz 10A Rated power supply.
5. To avoid electrical shock, do not place the cord, plug or toaster in water or other liquids.
6. Do not operate appliance with wet hands or operate in a wet working environment.
7. Do not let the power cord hang off the edge of the table or counter or come in contact with hot surfaces.
8. Do not place the toaster on or near a hot surface.
9. If the supply cord is damaged, it must be replaced by the manufacturer, its service agent or similarly qualified persons in order to avoid a hazard.
10. Unplug appliance from outlet when not in use.
11. This appliance is not intended for use by persons (including children) with reduced physical, sensory or mental capabilities, or lack of experience and knowledge, unless they have been given supervision or instruction concerning use of the appliance by a person responsible for their safety.
12. Children should be supervised to ensure that they do not play with the appliance.
13. Do not move the toaster while it is switched on.
14. Do not place any objects such as toast, bread or similar on top of your toaster when in use.
15. Operate the toaster on a flat level surface.
16. The bread may burn, therefore do not use the toaster near or below combustible material, such as curtains.
17. Do not leave your toaster unattended when in use.
18. Do not allow crumbs to accumulate in the crumb tray by cleaning tray regularly.
19. Do not toast dry items that may be flammable as they could catch on fire.

AFTER SALES SUPPORT

  1300 663 907

 customercare@winplus.com.au

MODEL: TDB800 PRODUCT CODE: 46770 10/2014



Warnings Continued

- 20.** Never attempt to extract jammed toast, crumpets or muffins with a knife or any metal object, as contact with the live element may cause electrocution.
- 21.** The temperature of accessible surfaces may be high when the appliance is operating.
- 22.** Appliances are not intended to be operated by means of an external timer or separate remote-control system.

AFTER SALES SUPPORT

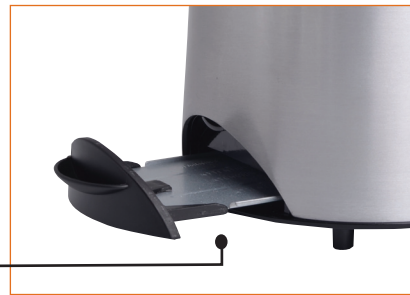
  1300 663 907

 customercare@winplus.com.au

MODEL: TDB800 PRODUCT CODE: 46770 10/2014



Assembly and Parts List



- | | |
|--------------------------------|-------------------------|
| 1. Bread Slots | 6. Reheat |
| 2. Lever | 7. Bagel |
| 3. Adjustable Browning Control | 8. Cancel |
| 4. Anti-slip Feet | 9. Removable Crumb Tray |
| 5. Defrost | |

AFTER SALES SUPPORT

1300 663 907

customercare@winplus.com.au

MODEL: TDB800 PRODUCT CODE: 46770 10/2014

Getting Started

Before First Use

Before using your toaster for the first time remove any packaging material and promotional labels. Position your toaster on a firm level table or bench, clear of curtains and other combustible materials. You may notice an odour from the unit for the first use. This is normal and will cease after a short while.

NOTE: Confirm the toaster is not damaged and in good working order before disposing of original packaging.

Operation of your Toaster

1. Plug the toaster into a household power outlet and turn on the power.



2. Place up to 2 slices of bread, muffins or bagels into the bread slots.
3. Select the browning setting using the dial to the desired level. "1" being light and "5" being dark.

NOTE: The cancel button will automatically illuminate when the toasting cycle has started.

4. Once the browning setting has been selected, push the lever down gently until it clicks into place. This will commence the toasting cycle. At the end of the toasting cycle the toaster automatically raises the toast. Pressing the cancel button will stop the cycle and raise the bread at any point.

WARNING: The top surface of the toaster may be hot after toasting cycle is complete, take care when removing toast.

AFTER SALES SUPPORT

  1300 663 907

 customercare@winplus.com.au

MODEL: TDB800 PRODUCT CODE: 46770 10/2014

Features & Technical Specifications

Features

- Die Cast Aluminium Body
- Self-Centre Function
- 10mm Extra Lift
- Removable Crumb Tray
- Anti-Jam Function
- Automatic Power Cut-Off
- Anti-Slip Feet
- Defrost Setting
- Reheat Setting
- Bagel Setting
- Cancel
- Blue Backlit Buttons
- Adjustable Browning Control

Technical Specifications

Model Number: TDB800

Colour: Brushed Metal

Voltage: 220-240V AC 50Hz, Class 1

Power: 800W

Capacity: 2 Slice

Weight: 2.3kg

Warranty: 3 years

Extra Lift Function

To aid the removal of toasted items, use the high lift function to safely remove the items. Lift the lever upwards slightly once the toasting cycle is complete.

NOTE: In the unlikely event that the bread or crumpet becomes jammed, switch the power off at the power outlet. Remove the power plug from the power outlet and then carefully ease the bread out of the toaster, ensuring that you do not damage the element.

AFTER SALES SUPPORT

  1300 663 907

 customercare@winplus.com.au

MODEL: TDB800 PRODUCT CODE: 46770 10/2014



Frozen Bread

When toasting frozen bread:

1. Place the bread in the bread slots.
2. Choose the browning setting, and lower the lever until it clicks in place. Press the "Defrost" setting. The light behind the 'defrost' button will illuminate.

NOTE: The bread will be defrosted and toasted in the same cycle.

Bagels/Crumpets

Selecting the bagel setting will provide higher heat to the outside elements, cooking one side of your toast, muffin, crumpet or bagel more than the other side.

1. Insert 1 or 2 slices with the side to be toasted facing outwards in the bread slots.
2. Choose the browning setting, and lower the lever until it clicks in place.
3. Press the "Bagel" setting. The light behind the "Bagel" button will illuminate.

Reheating Toast

To reheat toast:

1. Place the bread in the bread slots.
2. Choose the browning setting "1". Lower the lever until it clicks in place.
3. Press the 'Reheat' setting, the light behind the 'Reheat' button will illuminate.

NOTE: Only use plain 'unbuttered' toast.

AFTER SALES SUPPORT

  1300 663 907

 customercare@winplus.com.au

MODEL: TDB800 PRODUCT CODE: 46770 10/2014



Cleaning and Storage

Always switch off and unplug the appliance from the power outlet before cleaning. Make sure the toaster has cooled down if recently in use. Clean the exterior with a damp cloth.

WARNING: Do not immerse the appliance in water or any other liquid.

Removable Crumb Tray

It is important to clean out the crumb tray regularly. If crumbs accumulate they can be a fire hazard. To clean, slide out the crumb tray, dispose of the crumbs and wipe down the tray with a damp cloth. Ensure the tray is dry before reinserting it.

TIP: You can also clean the interior of the toaster by turning it upside down over the sink or bin and gently shaking to clear the crumbs.



Storage

Ensure the toaster is turned off, unplugged, clean and dry before storing it. Allow the appliance to fully cool down if recently used. Do not store anything on top of the toaster.

AFTER SALES SUPPORT

  1300 663 907


 customercare@winplus.com.au

MODEL: TDB800 PRODUCT CODE: 46770 10/2014

FAQ

Problem	Solution
<i>My toaster won't turn on</i>	Check the power outlet is turned on. Make sure you press the lever until it clicks into place.
<i>My bread is stuck in the toaster</i>	Ensure you turn off power outlet and unplug cable and allow time for the toaster to cool. Once unplugged and cool attempt to remove the bread by using the 'extra lift' function. If still stuck, turn toaster upside down over a sink and gently shake.
<i>My toast is burning</i>	Turn down the browning control. 1 is the lowest setting.
<i>There is a burning smell when I use my toaster</i>	Clean your toaster and crumb tray to remove any crumbs or bread, see page 11.

AFTER SALES SUPPORT

  1300 663 907

 customercare@winplus.com.au

MODEL: TDB800 PRODUCT CODE: 46770 10/2014

Index

Assembly and Parts List	8
Bagel	8, 10, 11
Contents	2
FAQ	13
Features	10
Frozen Bread	11
General Safety	5
Getting Started	9
Extra Lift function	10, 13
Lever	8, 9, 10, 11, 13
Reheat	8, 10, 11
Removable Crumb Tray	8, 12
Storage	12
Technical Specifications	10
Warnings	6
Warranty Details	3
Welcome	4

AFTER SALES SUPPORT

  1300 663 907

 customercare@winplus.com.au

MODEL: TDB800 PRODUCT CODE: 46770 10/2014



Repair and Refurbished Goods or Parts Notice

2 Slice Toaster

Unfortunately, from time to time, faulty products are manufactured which need to be returned to the Supplier for repair.

Please be aware that if your product is capable of retaining user-generated data (such as files stored on a computer hard drive, telephone numbers stored on a mobile telephone, songs stored on a portable media player, games saved on a games console or files stored on a USB memory stick) during the process of repair, some or all of your stored data may be lost.

We recommend you save this data elsewhere prior to sending the product for repair.

You should also be aware that rather than repairing goods, we may replace them with refurbished goods of the same type or use refurbished parts in the repair process.

Please be assured though, refurbished parts or replacements are only used where they meet ALDI's stringent quality specifications.


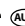
If at any time you feel your repair is being handled unsatisfactorily, you may escalate your complaint. Please telephone us on 1300 663 907 or write to us at:

Winplus Australasia
PO BOX 537
Bayswater Business Centre
Bayswater, VIC 3153

Winplus Help Desk 1300 663 907
(Operating Hours: Mon-Fri 08:30AM to 6:00PM)

customer@winplus.com.au
www.winplus.com.au

AFTER SALES SUPPORT

  1300 663 907

 customer@winplus.com.au

MODEL: TDB800 PRODUCT CODE: 46770 10/2014



