

# BAUHN®

EFFORTLESS TECHNOLOGY

## accessories

### Indoor / Outdoor Wi-Fi Range Extender



#### GETTING STARTED

## 1 UNPACK

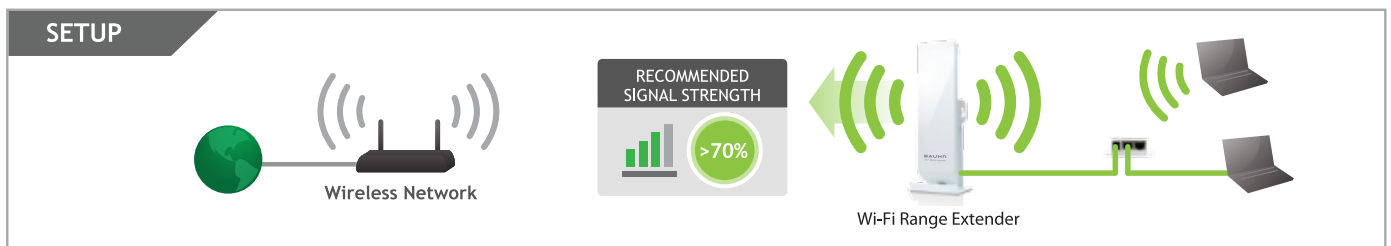
Unpack the Indoor / Outdoor Wi-Fi Range Extender from the packaging and check you have all components.

- a. Wi-Fi Range Extender
- b. Stand
- c. Metal Pole Clamp
- d. PoE Adaptor
- e. Power Adaptor
- f. 10m PoE Cable
- g. 1m Ethernet Cable
- h. Plastic Pole Strap



## 2 FIND A LOCATION FOR INSTALLATION

The Wi-Fi Range Extender should be positioned within an area that already receives over 70% Wi-Fi signal from your router or modem. You will need to be close to a power point and your PC or laptop.



See back side for mounting instructions.

**TIP: PERFORM INITIAL SETUP WITHIN 3M OF YOUR ROUTER AND MODEM AND REPOSITION ONCE SET UP IS COMPLETE.**

# BAUHN®

EFFORTLESS TECHNOLOGY

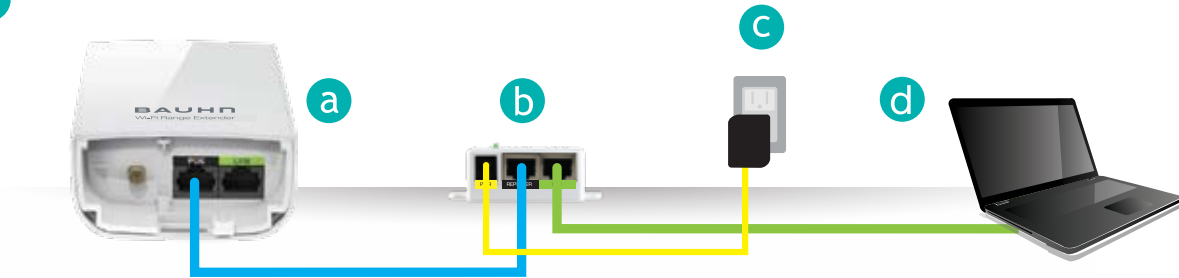
## accessories

### Indoor / Outdoor Wi-Fi Range Extender



#### GETTING STARTED

### 3 HARDWARE CONNECTIONS




- a** Open the lid at the bottom of the Wi-Fi Range Extender and check that the 10m PoE cable is securely fastened to the **POE** port.
- b** Locate the PoE Adapter and connect the 10m PoE cable to the **REPEATER** port on the PoE Adapter.
- c** Locate the power adapter and connect one end to a power outlet and the other end to the **POWER** port on the PoE adapter.
- d** Use the included network cable to connect your PC to the PoE adapter's **LAN** port.

**NOTE:** When set up is complete, you will need to remove the **LAN** cable or the system will not work correctly.

### 4 DISCONNECT YOUR PC FROM ANY WIRELESS NETWORK

Disconnect your PC from your Wi-Fi network.

#### Windows 7 Example

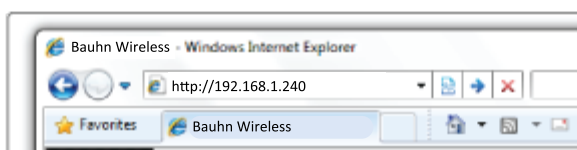
Click on the wireless icon  to see your current network connections. Select your current wireless network and click **Disconnect**.

**Tip:** Turn off your wireless connection entirely to avoid automatic connections taking place.



### 5 CONNECT TO THE SETUP WIZARD IN YOUR BROWSER

Open up your web browser – Internet Explorer or Safari for example.



Navigate to:

**http://192.168.1.240**

in your web browser.

**Note:** Accessing the setup menu does not require Internet access. If you are connected to the internet- you will be redirected.

# BAUHN®

EFFORTLESS TECHNOLOGY

## accessories

### Indoor / Outdoor Wi-Fi Range Extender



#### GETTING STARTED

## 6 SMART SETUP WIZARD

**Welcome to the Smart Setup Wizard**

The Bauhn Wireless Wi-Fi Range Extender extends your wireless coverage by repeating the signal from your home or office wireless network. The Smart Setup Wizard will guide you through the simple setup of your Wireless Smart Repeater. Click here to continue.

The wizard will guide you through each step of the Wi-Fi Range Extender setup.

Click **Next** to begin.

## 7 SCAN FOR YOUR HOME WIRELESS NETWORK

**Scan for a Wireless Network to Repeat**

It is recommended that you connect to a wireless network with greater than 70% signal strength. Connecting to a network with poor signal strength may cause the connection to be unstable.

**SCAN**

Home Network (SSID)	Channel	Type	Security	Signal
Network 1	6 (B+G+N)	AP	WPA2	92%
Network 2	11 (B+G)	AP	WPA	12%
Network 3	1 (B+G+N)	AP	WEP	45%

Select your network from the list above.

**NEXT**

Click **scan** to search for all available wireless networks in the area.

Click to select your **HOME** wireless network then click **next** to continue.



### Recommended Signal

Select the wireless network with a signal strength greater than **70%** for the most reliable connection.

Poor signal connections may cause slow speeds or dropped connections.

**Note:** If you do not see your home wireless network, move your Wi-Fi range extender closer to your modem or router.

**Tip:** Check that your **home** wireless signal strength is greater than 70%. If it is not, move your Wi-Fi range extender closer to your modem or router.

# BAUHN®

EFFORTLESS TECHNOLOGY

## accessories

### Indoor / Outdoor Wi-Fi Range Extender



## GETTING STARTED

### 8 HOME NETWORK SECURITY SETTINGS

**Security Settings (optional)**

The Wi-Fi network (Home Network) that you are trying to connect to has security enabled. Please enter the security key below. If your Home Network does not have security, leave this field blank and click Next.

Home Network Security Key:  Leave blank for networks without security

[BACK](#) [NEXT](#)

If your home wireless network has security settings enabled. You will need to enter your home network password at this step.

If you do not have a password on your home network then you do not need to put anything in the password field.

Click [next](#) to continue.

Note: You will not be prompted if you enter an incorrect password. If you do not have an internet connection after completing setup, retry this step. See page 47 of the manual for more details.

### 9 CONFIGURE THE EXTENDED NETWORK

**Repeater Settings**

Configure the settings for your Extended Network.

**Extended Network ID**  
The identification name of your "Extended" wireless network is "Bauhn\_Wireless." This is the name that wireless users will use to connect to your network. You may change the settings below.

Extended Wireless Network ID (SSID):

**Extended Network Security Key**  
Your Extended Network is secured with the following key. You must enter this key when connecting wirelessly for the first time to the Range Extender. You may change the key below.

Extended Network Security Key:   
8 Character Minimum  
Leave blank for no security

Click Next to confirm your settings and continue. The Range Extender will reboot and perform a connection test. Please do not disconnect the Range Extender during reboot.

[BACK](#) [NEXT](#)

The default ID of the extended network is: **Bauhn\_Wireless.**

To change it, enter a new name in the SSID field. Users connecting wirelessly to the Wi-Fi Range Extender will use this ID to identify your extended network.

The default Security Key (WPA) of your extended network is **wireless**

To change it, enter a new password in the Security Key field. It must be at least 8 characters longer.

Click next to apply your settings. The Wi-Fi Range Extender will reboot. This process may take up to 2 minutes. Do not refresh the web page. The page will automatically reload with the connection status.

# BAUHN®

EFFORTLESS TECHNOLOGY

## accessories

### Indoor / Outdoor Wi-Fi Range Extender



## GETTING STARTED

# 10

## SETUP SUMMARY

### Setup Summary

Congratulations, the Wi-Fi Range Extender is now successfully connected to your Home Network. You may disconnect from the Wi-Fi Range Extender and connect wirelessly or attach additional computers and devices to the wired network ports on the back of the Wi-Fi Range Extender.

Home Network Settings:	
SSID:	Bauhn_Wireless
Channel Number:	3
Encryption:	WPA2
BSSID:	
State:	Connected

Extended Network Settings:	
SSID:	Bauhn_Wireless
Encryption:	WPA
IP Address of the Repeater:	192.168.1.2
Subnet Mask:	255.255.255.0
Default Gateway:	192.168.1.1
DHCP Server:	Auto
MAC Address:	11:22:33:44:55:66

Congratulations! The Wi-Fi Range Extender is now successfully configured. Your settings are now saved. Disconnect the Ethernet cable from your computer to the Wi-Fi Range Extender. Connect your computer wirelessly to the new wireless network **Bauhn\_Wireless**.

Note: Ensure you disconnect the Ethernet cable from the range extender before use.

Tip: You can now reposition your Wireless Range Extender to a new location. Your settings will be saved if the Wi-Fi Range Extender is powered off. Ensure the new position receives 70% Signal strength for best placement.

# 11

## HOW TO CONNECT YOUR WIRELESS COMPUTER TO THE WI-FI RANGE EXTENDER:

### WINDOWS 7 & VISTA

A. Click on the Wireless icon to see available wireless networks (For Vista, click Start > Connect To). Select the **"Bauhn\_Wireless"** network and click **Connect**.



B. When prompted, enter the wireless security key **"wireless"** and click **OK**.



# BAUHN®

EFFORTLESS TECHNOLOGY

## accessories

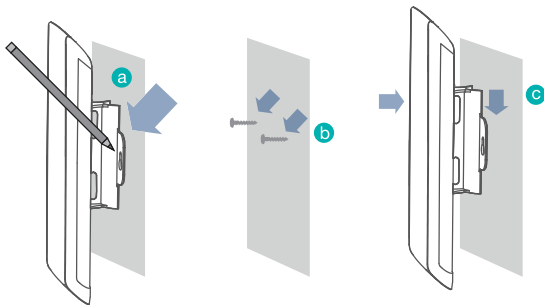
### Indoor / Outdoor Wi-Fi Range Extender



#### GETTING STARTED

## 12 MOUNTING INSTRUCTIONS

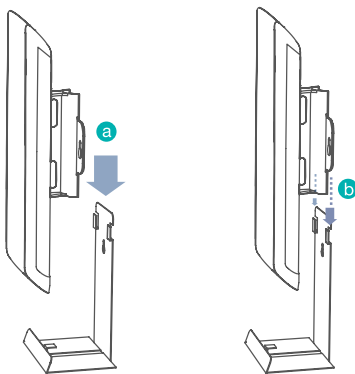
### WALL MOUNTING



When mounting outdoors, the Wi-Fi Extender must be mounted under the eaves of a building, sheltered from severe weather conditions and direct sunlight.

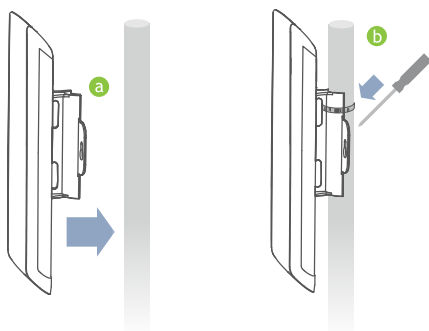
- a Place the Wi-Fi Range Extender against the wall, use a pencil and mark two pilot locations through the mounting hole on the wall.
- b Remove the Wi-Fi Range Extender and securely drill two screws where you have marked on the pilot location's wall.
- c Now, mount the unit onto the secured screws.

### DESKTOP MOUNTING



- a Place the stand in an optimum location.
- b Secure the Wi-Fi Range Extender onto the desktop mount.

### POLE MOUNTING



- a Place the Wi-Fi Range Extender against the pole.
- b Use the included hose clamp or plastic tie and secure the Wi-Fi Range Extender to the pole by inserting one side of the clamp through the smaller hole located on the bottom of the mounting bracket. If using the metal hose clamp, use a screw driver to fasten the clamp until the adapter is securely mounted.