

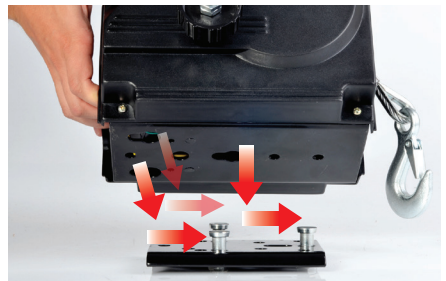
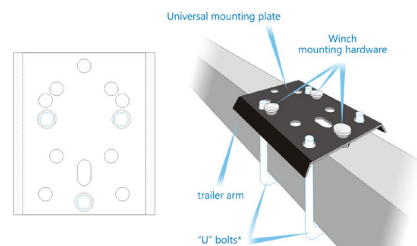


AU315001 12V BOAT WINCH Getting Started Guide

This guide is a reference only. Ensure you read the included instruction manual before using the Auto XS® Boat Winch.

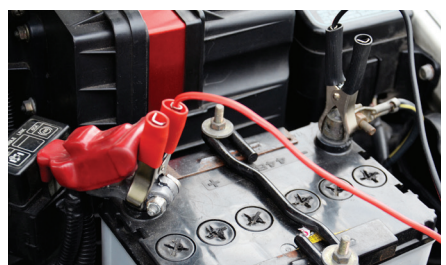
Mounting the Winch

- 1 Consult your trailer manual to locate best position to fix the mounting plate.
- 2 The included mounting plate is designed for use with U-bolts (sold separately). Select appropriate sized U-bolts to suit your trailer before installation.
- 3 After the plate is securely mounted, align the base of the boat winch with the three quick release mounting bolts on the plate. Once inserted, slide forward and ensure the winch is secure.



Connecting the Winch

- 1 Plug the input of the power lead into the power socket located on the side of the boat winch.
- 2 Connect the power lead to your car battery by securely clipping the black clasp to the negative terminal of the battery, then connect the red clasp to the positive terminal. Connect the wired remote control to the remote control socket, located on the side of the boat winch.



After Sales Support

1300 663 907

customercare@winplus.com.au

Model Number AU315001



AU315001 12V BOAT WINCH

Getting Started Guide Continued

Using the Winch

- 1** Ensure your vehicle is in Park and engage your hand brake. Use a wedge under the wheel of the vehicle.
- 2** Release the clutch on the winch by turning the clutch knob counter clockwise.
- 3** Pull out the length of cable required, and attach the hook onto the load. Only connect to a designated pulling point, tow strap or chain intended for towing.
- 4** Re-tighten the clutch knob by turning it clockwise to engage the electric motor.
- 5** Start the car engine and stand at a safe distance before operating the boat winch. When it is safe to operate, press IN on the remote control to retract the cable.
- 6** Remove and store in a dry place when not in use.

