

TRUE WIRELESS EARBUDS



SETUP GUIDE

HE180250
12/19



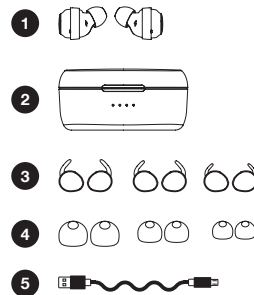
SAFETY WARNINGS

- Only use attachments/accessories specified by the manufacturer
- To avoid accidental ingestion, keep the earbuds away from children and pets
- The earbuds contain a lithium-ion battery, and may be hazardous if swallowed
- If ingested, seek immediate medical attention
- When not in use, store the earbuds in the charging case with the lid closed, and keep out of reach of small children and pets
- Do NOT use the earbuds at a high volume for any extended period
- To avoid hearing damage, use your earbuds at a comfortable, moderate volume level
- Turn the volume down on your device before placing the earbuds in/on your ears, then turn the volume up gradually until you reach a comfortable listening level
- Use caution and follow applicable laws regarding mobile phone and headphone use if using the earbuds for phone calls while driving
- Some jurisdictions impose specific limitations, such as single ear piece configuration, on the use of such products while driving
- DON'T use the earbuds for any other purpose while driving
- Focus on your safety and that of others if you use the earbuds while engaging in any activity requiring your attention, e.g., while riding a bicycle or walking in or near traffic, a construction site or railroad and follow applicable laws regarding headphone use, etc.
- Remove the earbuds or adjust your volume to ensure you can hear surrounding sounds, including alarms and warning signals
- Do NOT allow small children to use the earbuds
- Do NOT submerge or expose the earbuds for extended period to water, or wear while participating in water sports, e.g., swimming, water-skiing, surfing, etc
- When using this product, basic precautions should always be followed, including the following:
 - Read all the instructions before using the charging case
 - To reduce the risk of injury, close supervision is necessary when the charging case is used near children
- Do not expose charging case to water, rain, liquids or snow
- Use of a power supply or charger not recommended or sold by power pack manufacturer may result in a risk of fire or injury to persons
- Do not use the charging case in excess of its output rating
- Do not use a charging case that is damaged or modified. Damaged or modified batteries may exhibit unpredictable behaviour resulting in fire, explosion or risk of injury to persons
- Do not disassemble the charging case. Incorrect reassembly may result in risk of fire or injury to persons
- Do not open, crush, or expose a charging case to fire, or excessive temperature. Exposure to fire or temperature above 100° C may cause explosion
- Have servicing performed by a qualified repair person using only identical replacement parts.
- Do NOT make unauthorized alterations to this product
- Use this product only with an agency approved power supply which meets local regulatory requirements (e.g., RCM)
- Do not expose products containing batteries to excessive heat (e.g. from storage in direct sunlight, fire or the like)
- Wipe off sweat from the earbuds and the charging case before charging
- Contains small parts which may be a choking hazard. Not suitable for children under age 3
- This product contains magnetic material. Consult your physician on whether this might affect your implantable medical device
- Danger of explosion if battery is incorrectly replaced. Replace only with the same or equivalent type
- Battery shall not be exposed to excessive heat such as sunshine, fire or the like

IN THE BOX

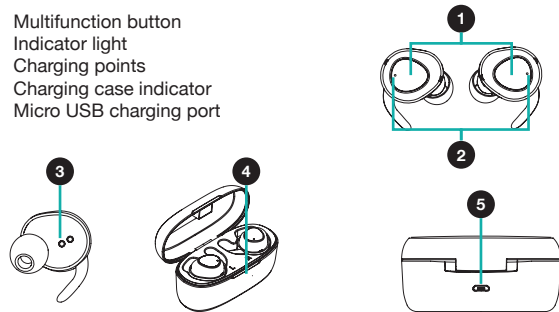
1. 1 x True Wireless Earbuds
2. 1 x Earbud Charging Case
3. 3 x Ear Hooks (S / M / L)
4. 3 x Earbuds (S / M / L)
5. 1 x Micro USB Charging Cable
6. 1 x Setup Guide*
7. 1 x Warranty Certificate*

*Not pictured



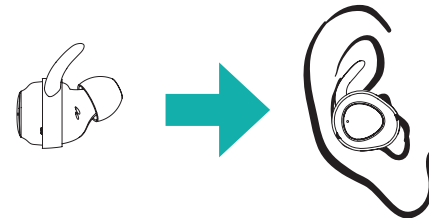
FUNCTIONS

1. Multifunction button
2. Indicator light
3. Charging points
4. Charging case indicator
5. Micro USB charging port



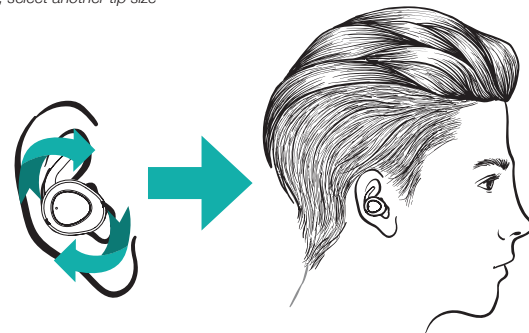
HOW TO WEAR YOUR EARBUDS

1. Place the earbud into your ear canal



2. Adjust the earbud by rotating it back and forth until it feels comfortable

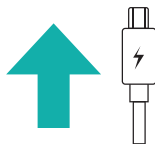
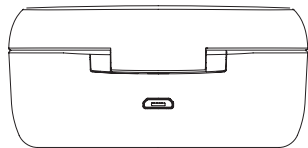
NOTE: To test the fit, try speaking aloud. Your voice should sound muffled in both ears; if not, select another tip size



CHARGING (CASE)

To power up the charging case, simply connect it to a USB power supply (not included) via the supplied Micro USB Cable

- The LEDs on the front of the charging case will flash when charging
- When fully charged, all 4 LEDs will remain on for one minute and then turn off. The fully charged case will recharge both earbuds 4-5 times



LED light status

- ○ ○ ○ - 25% battery or less
- ● ○ ○ - 50% battery or less
- ● ● ○ - 75% battery or less
- ● ● ● - 100% battery or less

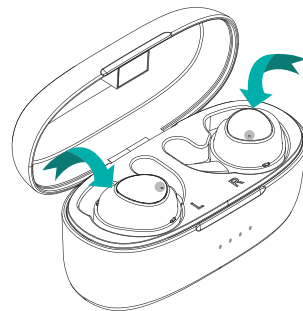
CHARGING (EARBUDS)

To charge the earbuds, simply place them into the charging case

NOTE: Ensure two earbuds are placed in corresponding slots labelled 'L' and 'R'

The LEDs on both earbuds will turn red which will indicate that both earbuds are under charging status and then shut off when fully charged

NOTE: Please charge the earbuds and the charging case at least once every 3 months. Please disconnect the charger when the charging case is fully charged



TURNING ON/OFF

Turning on

Method 1: Take both earbuds out from the charging case, they will turn on and connect with each other automatically

Method 2: When the earbuds are off, press and hold the multi-function button on both earbuds for 5 seconds (LEDs on both earbuds will flash blue for 1 second)

Turning off

Method 1: Put the earbuds back into the charging case, they will turn off automatically

Method 2: When the earbuds are on, press and hold the multifunction button on either earbud for 5 seconds (LEDs on both earbuds will flash red for 1 second)

NOTE: If you turn one of the earbuds off while both earbuds are paired with your Bluetooth enabled device, the other one will turn off at the same time

PAIRING

Twin earbuds mode

1. Take both earbuds out from the charging case, they will power on and connect with each other automatically (The LEDs on the earbuds will flash blue and voice prompt will say "left channel" and "right channel")
2. Enable Bluetooth on your device and select "HE180250" from list to connect. You will hear a voice prompt "pairing successfully" once connected
3. Once the earbuds paired with your device manually for the first time as described above, they will pair with this device automatically each time in the future, as soon as you take them out from charging case

NOTE: If you hear voice prompt "Low battery" from one of the earbuds, the other one may still have some battery. You may put the low battery earbud back in the charging case and use the other one

CONTROLS

Play/Pause Music	Press the multifunction button once
Volume Up	Double press the multifunction button on the left earbud
Volume Down	Triple press the multifunction button on the left earbud
Next Track	Double press the multifunction button on the right earbud
Previous Track	Triple press the multifunction button on the right earbud
Answer/End Call	Press the multifunction button once
Reject Incoming Call	Press and hold the multifunction button for 2 seconds when a call is incoming
Activate Voice Assistant	Press and hold the multifunction button for 2 seconds until you hear a beep

TECH SPECS

Bluetooth version:	V5.0
Music playtime:	3.5 hours
Standby time:	80 hours
Effective distance:	Up to 10m
Frequency response:	20Hz---20 KHz

Charging Case

Battery capacity:	500 mAh
Charging voltage:	5V
Dimensions:	100 x 120 x 40mm