

LARGE ROOFTOP TENT

Instruction Manual

BALCO™

Model: OU200234

Version 1.1



Getting the most out of your Large Rooftop Tent:



Read the entire manual

It will help you set up with ease



Visit www.balcobrands.com

We have additional support guides



Call After Sales Support -

Or email customercare@balcobrands.com - we're always happy to help

Your Large Rooftop Tent comes with a **1 year manufacturer's warranty**

Our goods come with guarantees that cannot be excluded under the Australian Consumer Law. You are entitled to a replacement or refund for a major failure and compensation for any other reasonably foreseeable loss or damage. You are also entitled to have the goods repaired or replaced if the goods fail to be of acceptable quality and the failure does not amount to a major failure.

If you experience any issues with this product or its performance is not what you had expected, please contact our friendly customer service team

It is likely that we can resolve problems for you via phone or email

We can be reached on:

Phone: 1300 663 907 (Mon - Fri; 8:30am - 6:00pm AEST)

Email: customercare@balcobrands.com

Web: www.balcobrands.com

Contents

Large Rooftop Tent

Warnings & Notes	4
Maintenance	5
Pack Contents	6
Specifications	7
Operation	8
Unfolding	10
Folding Away	12

After Sales Support

 1300 663 907

customer@balcobrands.com
www.balcobrands.com

Model number: OU200234
11/2020

1. Keep the large rooftop tent windows open when folding.
2. Make sure nothing is left in the large rooftop tent before folding, for example sleeping bags, pillows, etc.
3. Do not put anything on the top of the large rooftop tent when the tent is on the car whether it is in use or not.
4. Please double check that the nuts that lock the bedframe together with the roof racks are tightened after installation and before driving.
5. Do not do strenuous exercise inside the tent.
6. Ensure the cover is closed and the buckle lock is securely fastened before driving! Maximum driving speed 110KM per hour.
7. Before using the ladder, make sure that all rungs are firm, and the extended parts have been locked.
8. Check all parts are in working condition before use. Do not step on damaged, worn-out, chemically etched ladder.
9. Set the ladder on firm ground. Do not let it stand on one leg. Do not set it on unsteady ground which as gangue, ice or snow in it without any anti-skid device.
10. Before climbing the ladder, please make sure the crosspieces are locked. Please do not reach out your body far away. Otherwise you will lose your balance. Face the ladder while climbing up and down, hold firmly the ladder with hands. Distribute your body weight on the middles of the rungs. Do not climb on single side. Do not jump from the ladder.
11. Do not pull out the top cross piece unless the ladder is fully extended, or it may fall.
12. Do not press the contract switch when in use to avoid injury to person.
13. Make sure the ladder is clean. Keep it from grease, dirt, snow, paint and chemicals.
14. Do not conduct any temporary maintenance on the ladder to damaged parts.
15. The bedframe and the ladder are all electric conductors, keep away from any live parts.
16. There must be an angle of 75 degrees between the ground and the ladder when in use.
17. To provide children with protection, do not leave the ladder standalone without any attention.
18. When contracting, grasp the latter rod by one hand and press the left and right

After Sales Support

switches of the lowest crosspieces. Do collapse the ladder down top sequentially and slowly to avoid hand injuries.

19. To extend the ladder you need to pull out rungs bottom-up sequentially and lock each rung carefully.
20. Before extending the ladder, make sure that ground is flat. To reduce the height, please collapse the ladder first and then extend it again to the height you want.
21. Do not use the tent and the ladder in strong wind weather.
22. The design of the ladder only permits one person to use, and the max loading is 150kg.

Maintenance

1. Use a wet cloth to clean the tent – allow to dry fully before folding.

Pack Contents

Large Rooftop Tent

1. 1 x Large rooftop tent - grey with orange
2. 2 x Telescopic ladders
3. 1 x Mattress
4. 1 x Tooling bag including:
 - a. 4 x U-shaped fixing plate
 - b. 8 x M8x40 bolt, T head
 - c. 8 x Big plain washers
 - d. 8 x M8x50 bolt hexagon head
 - e. 8 x Plain washer
 - f. 8 x Spring washer
 - g. 8 x M8x30 bolt hexagon head
 - h. 8 x Plain washer
 - i. 8 x Spring washer
 - j. 1 x Ratchet wrench 13mm
 - k. 1 x Hexagon bar wrench (allen key) 6mm
 - l. 10 x M8 self-locking nut
 - m. 10 x Insert with spring ball
 - n. 10 x M8x15 bolt, hexagon sockets
 - o. 10 x Plain washer
 - p. 10 x Spring washer
 - q. 4 x 30 x 30 plastic caps
 - r. 4 x 40 x 40 plastic caps
5. 1 x Manual

After Sales Support

Specifications

Large Rooftop Tent

- Closed size: 199 x 122 x 35cm
- Open size; 210 x 185 x 120cm
- Weight: 98kg
- Aluminium frame
- Aluminium telescopic ladder
- Mattress: 7cm thick
- Fabric:
 - Fly: 210D silver coated oxford fabric(waterproof : 3000mm & UV 50+)
 - Inner body: 190gsm polycotton (waterproof : 2000mm)
 - Hard Top: ABS plastic

After Sales Support

 1300 663 907

customercare@balcobrands.com
www.balcobrands.com

Model number: OU200234
11/2020

Operation

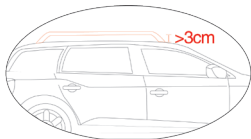
Large Rooftop Tent

- At least 2-3 people are needed to install a Balco Large Rooftop Tent.
 - The large rooftop tent should be installed so the opening is over either passenger or driver side doors. Do not install to open over the boot of the car.
1. Ensure that the roof racks have more than 3cm between the rack and the top of the car.

Note: You will need to get a set of suitable roof racks and install them on the car roof before you install the tent. You will need to check with the manufacture of the roof racks that they will be suitable for use with a rooftop tent.

2. Remove the large rooftop tent from the box and place on a clean surface. You will need to have access to the bottom of the tent. If you can see the two connecting tubes this is the bottom, if not carefully turn the tent over.

Note: We recommend that two people turn the tent over, this will make it easier and help prevent any damage to the tent.

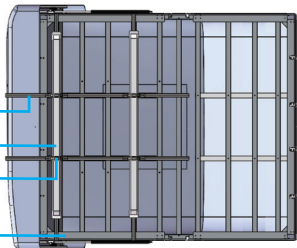


Big bottom
connecting tube

Roof rack

U-shaped
fixing plate

Bed frame



After Sales Support

Operation

3. According to the direction and size of the roof rack, loosen the screws, and adjust the direction and distance of the two-connecting tubes on the bottom of the tent, then tighten the screws.
4. Place the tent on the roof of the car and adjust the tent to an appropriate position on the car roof.

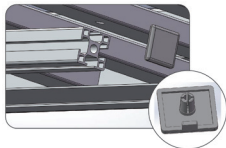
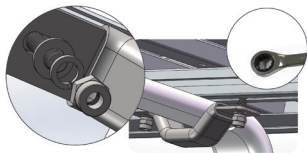
Note: Make sure that the boot door can be opened without hitting the tent.

5. Once you are happy with the position, slide the M8 x 50 bolts to the appropriate position from the end of the connecting tube. There needs to be one bolt on each side of the rack.

Note: If the distance between the roof rack and the car roof is less than 4cm the short bolts (M8 x30) will need to be used instead of the longer M8x50 bolts.

6. The bolts pass through the hole of the u - shape fixing plate, flat washer then spring washer in the proper order, then tighten the M8 self-locking nut using a ratchet wrench. This needs to be done on four corners, respectively.
7. Insert the plastic cap (30x30cm) into the end of the connecting tubes.

Large Rooftop Tent



After Sales Support

☎ 1300 663 907

customercare@balcobrand.com
www.balcobrand.com

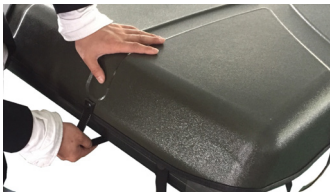
Model number: OU200234
11/2020

Operation

Large Rooftop Tent

Unfolding

1. Untie the buckle.
2. Hold firmly on the lowest rung of the ladder and then pull the ladder towards yourself and away from the car. This will start to open the tent.



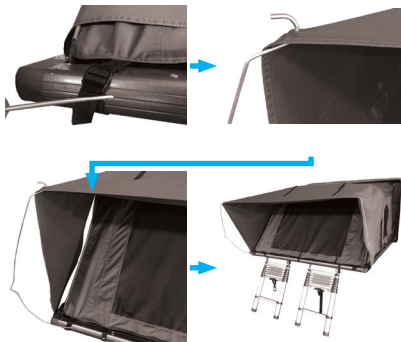
After Sales Support

Operation

Large Rooftop Tent

3. You will need to extend the ladder completely, locking the rungs in place. Once you have both ladders on the ground, remove the metal poles from inside and insert the hook through the eye on the top corner. Secure the bottom of the metal pole through the predrilled hole at the base of the tent. You will need to do this on each side.

Note: The hook should be facing away from the tent.



4. You can adjust the height using the rungs at the top. All rungs need to be fully extended and locked into place before use. When in use the ladder should be at an 75° angle.



After Sales Support

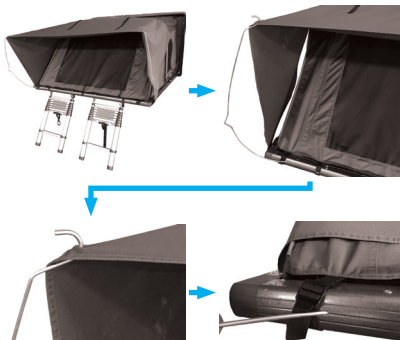
☎ 1300 663 907

customercare@baltobrand.com
www.baltobrand.com

Model number: OU200234
11/2020

Folding Away

1. Make sure to open all the curtains and nothing is left inside before folding.
2. Remove both metal hooks from each eye of the tent and allow the front to fold down.



3. Press and hold the button on the bottom of the ladder, folding the ladder back up to the base of the large rooftop tent.
4. Fasten the buckles around the bedframe before moving the car.



After Sales Support

BALCO™

After Sales
Support

Ph. 1300 663 907
customercare@balcobrands.com