

MOTORCYCLE BLUETOOTH KIT

Instruction Manual

BALCO™

Model: AU200016
Version 1.0



Read this manual thoroughly before first use and keep it in a safe place for future reference, along with the warranty card, purchase receipt and carton. The safety precautions enclosed here in reduce the risk of fire, electric shock and injury when correctly adhered to. Follow all instructions and take notice of all warnings to reduce the risk of fire or electric shock.

- Do not remove the cover or the back of this product. There are no user-serviceable parts inside this product.
- Do not repair the unit yourself. Only have it serviced by qualified personnel. Supervise young children to ensure they do not play with the product.
- Do not submerge the product in liquids.
- Do not place the product near other items that may damage it, such as naked flame sources (lit candles) or excessive heat (bar radiator).
- Do not place near strong magnets or strong electric currents.
- Do not expose to chemicals, oils, or other liquids.
- Do not drop or jar the product. Dropping or rough use of the unit will cause damage.
- Do not attempt to open the product housing. There are no user-serviceable parts inside this product.
- Dispose of the product according to local standards and regulations
- When you disconnect the power cord or any enhancement, grasp and pull the plug, not the cord. Never use a charger that is damaged
- Danger of explosion if battery is incorrectly replaced. Replace only with the same or equivalent type
- Battery shall not be exposed to excessive heat such as sunshine, fire or the like
- Attention should be drawn to the environmental aspects of battery disposal

WARNING: Using headphones while operating a motorcycle, motor vehicle, watercraft or bicycle can be dangerous. Use caution while using your Motorcycle Bluetooth® Kit when you are engaging in any activity that requires your full attention.

This product has been tested according to AS/NZS CISPR 32:2015, AS/NZS 4268:2017 and AS/NZS 60065:2018

Safety Instructions	2
Contents	4
Parts List	6
Product Overview	6
Technical Specifications	7
Setup	8
Fitting the Bluetooth receiver to you helmet	8
Charging the Bluetooth receiver	9
Powering on and off	10
Operation	11
Operating with a Bluetooth enabled mobile	11
Pairing	11
Phone calls	11
Operating with a Bluetooth enabled audio device	12
Playing music	12
Answering a call while listening to music	12
Voice assistant	12
The multifunction button	13
Operating the camera	13
Start video recording	13
Taking photos	14
Turning off the camera	14
Viewing videos and photos on your phone	14
Synchronising time with your phone	14

Motorcycle Bluetooth Kit

Operating via intercom	14
Pairing one Balco Motorcycle Bluetooth® receiver to another	14
Starting a conversation via the intercom	15
Ending a conversation via the intercom	15
Pairing multiple Bluetooth receivers via the intercom	16
Speaking in a group	17
Operating with a walkie-talkie	17
Maintenance, Storage & Disposal	18
Troubleshooting	19

After Sales Support

 1300 663 907

customercare@balcobrands.com
www.balcobrands.com

Model number: AU200016

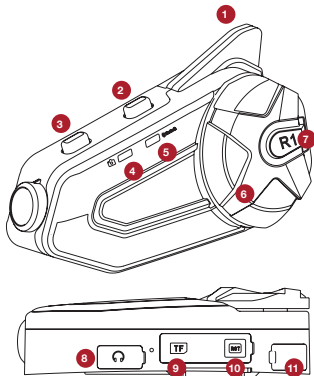
Parts List

1. 1 x Motorcycle Bluetooth® receiver
2. 1 x Microphone speaker
3. 1 x Clip
4. 1 x Allen key
5. 1 x PTT VELCRO tape
6. 4 x Headphone Velcro
7. 1 x USB Cable
8. 1 x Walkie-talkie PPT control cable
9. 1 x Manual
10. 1 x Warranty card

Motorcycle Bluetooth Kit

Product Overview

1. Antenna
2. WiFi button
3. Camera button
4. Recording indicator
5. Bluetooth indicator
6. Jog wheel
7. Multifunction button
8. Earphone jack
9. Memory card slot
10. Reset button
11. Walkie-talkie jack



After Sales Support

- Frequency: 2.4GHz
- Supports: A2DP and AVRCP
- Supported Bluetooth Profiles: Bluetooth Headset and Hands free
- Camera Resolution: 1080P
- Input rating: 5V d.c. 1A
- Operating Range: Up to 10m for cell phones: up to 500 meters for intercom function
- Support 6 people connection
- Weight: 77grams (excluding accessories)
- Size: 98mm(L) x 58mm(W) x 30mm(H)
- Battery type: Rechargeable Lithium Polymer 1500mAh
- Stand by: Up to 300 hours
- Working Time:
 - Video recording: 4.5hours
 - Phone: Up to 30 hours
 - Intercom: Up to 7 hours
- Charging Time: 3 hours
- Headset: High Power ultra slim speaker with integrated boom
- IP Rating: IP65
- Bluetooth Version: 2.1

After Sales Support

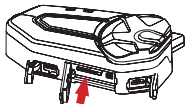
 1300 663 907

customercare@balcobrands.com
www.balcobrands.com

Model number: AU200016

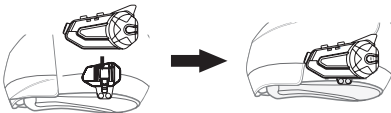
Fitting the Bluetooth receiver to your helmet

1. Open the TF card Slot as shown to the right and insert the memory card (can support a max of 64G TF card).
2. Using the Allen key provided, loosen the Headset Clip screws.
3. Slide the Headset Clip onto the left side of the helmet (when on your head). Take care to place the inside of the Headset Clip under the helmet padding.
4. Adjust the clip until you find the best location for your helmet. Ensure that the slots in the Headset Clip mount are facing away from the helmet.
5. Tighten the screws to hold the clip firmly in place.

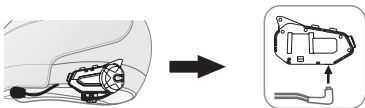


Note: Take care not to over tighten the screw as this can break the clip.

6. Slide the Bluetooth receiver down into the slots on the headset clip. Make sure that this is securely locked in.
7. To attach the ear speaker & microphone headset, test which part of the helmet will be the best location by putting your helmet on and locating the place closest to your ears. You will need to put the helmet on a few times to find the optimum position to apply the pad. When the correct position is found, remove the adhesive protective strip, and apply to the felt adhesive earphone pad.



- Attach ear speaker to the felt adhesive earphone pad. Run the microphone arm along the inside wall of the helmet, to where your mouth will be. The microphone arm is flexible and should be adjusted so it sits in the best position in front of your mouth. Some helmets have removable padding; if yours does, it is recommended to run the speaker and microphone under the padding.
- Connect the headset to the Bluetooth® receiver. The plug can only be inserted in one orientation.
- Secure the cord of the headset plug inside the helmet. Tuck any extra wire into the helmet. Ensure that only a few centimetres of the cord comes out.



You have successfully mounted the Motorcycle Bluetooth Kit.

Charging the Bluetooth receiver

Before using the device fully charge the battery, this will take about 3 hours.

- Insert the USB-C charging cable into the charging port on the headset. Insert the other end of the charging cable into either a power adaptor or your computer's USB port.
- When charging, the LED light will be a solid red colour. When the battery is fully charged the red light will turn off.
- When the battery is fully charged and the bluetooth is connected a blue LED light will flash.

Powering on and off

1. To turn the device ON, press the multifunction button for 3 seconds until you hear a voice prompt: 'Power on' then release the button.
2. To turn the device OFF, press the multifunction button for about 8 seconds until you hear a voice prompt: 'Power off' then release the button.

Operating with a Bluetooth enabled mobile

Pairing

1. Place your Bluetooth enabled phone and the Bluetooth receiver near each other (within 1 meter).
2. Make sure the Motorcycle Bluetooth is turned off.
3. In shutdown state, hold the Multifunction button down for 6 seconds until you hear the voice prompt: 'Pairing' then release the button, the indicator LED will flash red and blue.
4. Activate Bluetooth on your mobile phone and search for the Bluetooth receiver (Refer to your phones instruction if you are unclear on how to search for a Bluetooth device).
5. Choose the Bluetooth device named Balco Motorcycle Bluetooth and choose to pair this device.
6. The indicator LED will change to blue and you will hear a voice prompt 'Connected'.

Phone calls

Answering incoming calls

1. Press the multifunction button once to answer the incoming call you will hear a voice prompt "Call answered". (The call will be automatically answered after 10 seconds if no action is taken)
2. Use the jog wheel to increase or decrease the volume of the headset.

Ending phone calls

Press the multifunction button once to end the call you will hear a voice prompt: 'Call terminated'.

Rejecting phone calls

Hold down the multifunction button for 2 seconds, then release your hand when you hear a voice prompt: 'Call rejected'.

Operating with a Bluetooth enabled audio device

Playing music

1. Select music to play directly from your audio device (check your audio device or phone instructions for how to do this).
2. Play music through the headset press the multifunction button once.
3. Pause music press the multi-function button again.
4. Skip songs forward by quickly turning the jog wheel in a clockwise direction.
5. Skip songs backwards by quickly turning the jog wheel in an anti-clockwise direction.
6. Volume up by turning the jog wheel clockwise and holding until the volume is at the right level.
7. Volume down by turning the jog wheel anti clockwise and holding until the volume is at the right level. You will hear a long beep if the volume is at the highest or lowest level.

Answering a call while listening to music

Calls will automatically come through the headset while music is playing.

1. To answer a call, press the Multifunction button once.
 2. To reject a call, hold the multifunction button down until you hear a beep
- Music will pause for the call duration and resume automatically once the call has ended.

Voice assistant

To activate voice assistant (or to finish using the voice assistant function on your phone): press and hold the multifunction button for 2 seconds (your phone must be compatible with voice assistant).

The multifunction button

Music/ FM control: if there is no pairing, double click the multifunction button to switch to FM then click the multifunction button and switch to music mode.

Note: If you have paired your motorcycle Bluetooth with another rider you will have to disconnect the intercom, then reconnect your Bluetooth receiver and phone and click the multifunction button. Double click the multifunction button to switch between music mode.

FM station selection: Turn the jog wheel clockwise to the next FM channel, and anti-clockwise to the previous one.




Volume control: Turn the jog wheel clockwise to the end and hold until the volume reaches your desired level. When the volume meets maximum level you will hear a tone. To reduce the sound turn the jog wheel anti-clockwise and hold until the volume reaches the desired level. When the volume reaches the lowest level you will hear a tone.

Note: This is the same for when using the intercom or listening to music

Next song: Turn the jog wheel clockwise to skip ahead or anticlockwise to hear the previous song.

Operating the camera

Start video recording

1. Hold down the  key for 5 seconds to turn on camera, press the  key once more to enter video recording mode. You will hear a voice prompt: 'Video recording' (each video segment will last 3 minutes)
2. Press  again to stop recording, you will hear a voice prompt: 'Video recording stopped'
3. When it is recording, the LED will show green (when the TF card is full the Device will cycle record over the oldest footage first.)
4. If there is no memory card, you will hear a voice prompt: 'No TF card' (will support Max. 64G memory card) video recording or photo function can be used. Note: TF card is not included.

Taking photos

When you are in video recording mode, press the  key to capture an image.

Turning off the camera

To turn off the camera hold down the  until you hear a tone.

Note: Cancelling the Bluetooth connection will not turn off the camera, you will need to do this separately.

Viewing videos and photos on your phone

1. Download the GoPlus Cam app on to your mobile phone.
2. Turn on Wi-Fi by holding down the  key for 3 seconds, you will hear a voice prompt: 'Wi-Fi Turn on' and the green LED will rapidly flash.
3. After turning on the Wi-Fi go into Wi-Fi setting on your phone and choose the "Balco Motorcycle Bluetooth" Wi-Fi name to connect. If it requires a password, please enter "12345678" and confirm to continue.
4. Open the GoPlus cam app on your phone and view the videos and photos.

Note: You can also view the saved videos or photos on your computer via the TF card.

Synchronising time with your phone

1. Open the GoPlus Cam icon on your phone to open the app.

Note: Your phone must be connected to WIFI to complete this.

2. Click the version number on the button left corner.
3. Click "set the WIFI sport cam time" option, then chose "enable".

Operating via intercom

Pairing one Balco Motorcycle Bluetooth® receiver to another

1. Turn OFF both Balco Motorcycle Bluetooth receivers.
2. Place both receivers within a 1m visible range of each other.
3. Press and hold the Multifunction button on both receivers for 10 seconds until you hear a voice prompt: 'Pairing'. The LED indicator will flash blue and red alternatively.

4. Quickly press the multifunction button on one of the receivers (we will call this receiver A) and it will start searching for the other receiver (receiver B) so they can be paired
5. You will hear a voice prompt 'Intercom connected'. When they have been successfully paired the red and blue LED will change to a flashing blue only light.

Note: If either of the receivers do not have a flashing blue and red LED, clear the previous intercom connections, see step 1 on page 16 of this manual and then repeat above steps.

Starting a conversation via the intercom

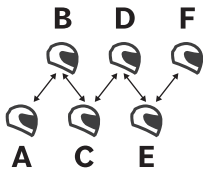
Once the two receivers are paired, simply begin talking. Use the jog wheel to increase or decrease the volume.

Ending a conversation via the intercom

Press the multifunction button on either receiver to end the conversation you will hear a voice prompt 'Intercom disconnected'.

Pairing multiple Bluetooth receivers via the intercom

You can have up to 6 Motorcycle Bluetooth receivers connected at one time.



1. To clear any previous intercom connections. Press and hold the Multifunction button of both Balco Motorcycle Bluetooth receivers for 8 seconds until you hear a voice prompt: 'Off' then hold the button for another 3 seconds until you hear a double beep.
2. "A" connects with "B" and shutdown B after pairing.

Note: You will need to shut down without clearing the intercom connection to each last paired device.

3. Connect B to C and shutdown C after pairing.
4. C connects with D and shutdown D after pairing.
5. D connects with E and shutdown E after pairing.
6. E connects with F.

Connect A, B, C, D, E, F in tandem arrangement

1. Press the Multifunction button of D to connect to E, you will hear an intercom prompt voice.
2. Press the Multifunction button of C to connect to D, you will hear an intercom prompt voice.
3. Press the Multifunction button of B to connect to C, you will hear an intercom prompt voice.

4. Press the Multifunction button of A to connect to B, you will hear an intercom prompt voice.

Now A, B, C, D, E, F are successfully connected, and you can use group talk.

Speaking in a group

Once all the Bluetooth receivers are connected you can start talking to all riders at the same time. See starting a conversation via the intercom on page 15 for instructions.

Operating with a walkie-talkie

1. Connect the Bluetooth receiver to the walkie-talkie with the PPT control line.
2. Bind the PPT Velcro tape to the handlebar of your motorbike.
3. Stick the PTT button to the Velcro tape.
4. Place the walkie-talkie in a suitable place so you can use the walkie-talkie while you are riding.

Note: When connected to multiple devices the functions will work in the following priority order: Phone calls > PPT intercom > Bluetooth music/GPS/Voice reminder.

Maintenance, Storage & Disposal Motorcycle Bluetooth Kit

The Motorcycle Bluetooth Kit does not require scheduled maintenance or cleaning. Should cleaning be necessary, simply wipe the outside surface with a dry soft cloth. Be sure to unplug this device before cleaning. Always store your device in a clean dry environment and avoid storage in extreme heat or cold.

At the end of its working life, do not throw this product out with your household rubbish. Electrical and electronic products contain substances that can have a detrimental effect on the environment and human health if disposed of inappropriately. Observe any local regulations regarding the disposal of electrical consumer goods and dispose of it appropriately for recycling. Contact your local authorities for advice on recycling facilities in your area.

Observe and local regulations regarding the disposal of waste products. Contact your local authorities for advise on recycling facilities in your area.

Please keep the original packaging carton and materials in a safe place. It will help to prevent any damage if the product needs to be transported in the future. In the event it is to be disposed of, please recycle all packaging material where possible.

If you require another copy of this instruction manual, please contact customercare@balcobrands.com to obtain an electronic copy.

After Sales Support

Bluetooth cannot be turned on

If the Bluetooth cannot be turned on but the Bluetooth receiver can be turned in, it is usually because the Bluetooth was not successfully reset after a shutdown. Please press and hold the reset button for 5 seconds to reset the Bluetooth and then try to turn on the Bluetooth again.

Bluetooth receiver can not be turned on

If the Bluetooth receiver can not be turned on even though the battery has enough charge, it is usually because the Bluetooth receiver was not successfully reset after the last shut down. Please press and hold the reset button for 2 seconds to reset the Bluetooth and then try to turn on the Bluetooth again.

The music freezes when I open the app to view the video

When opening the App to view the video, due to the size of the video stream, it will interfere with the Bluetooth. The Bluetooth needs to be temporarily turned off and should only be turned on after exiting the app .

There is crackling noise when playing video on my mobile

Wi-Fi needs to be turned off after the video has been downloaded and is played for the first time. Doing this should prevent any crackling noise.

I cannot hear music/incoming calls

Check the volume on the Bluetooth receiver. Setting your phone or audio device to maximum volume usually resolves this issue.

After Sales Support

Ph. 1300 663 907
customercare@balcobrands.com