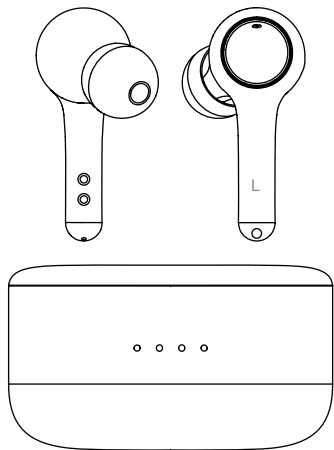


BAUHN®
PREMIUM RANGE
 TRUE WIRELESS EARBUDS



USER GUIDE

HE190044
 12/21

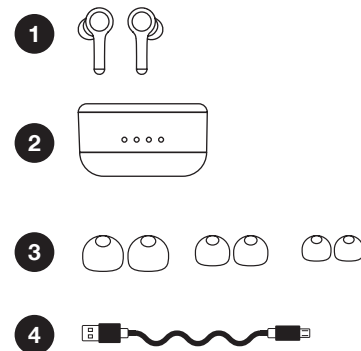
SAFETY WARNINGS

- Only use attachments/accessories specified by the manufacturer
- To avoid accidental ingestion, keep the earbuds away from children and pets
- The earbuds contain a lithium-ion battery, and may be hazardous if swallowed
- If ingested, seek immediate medical attention
- When not in use, store the earbuds in the charging case with the lid closed, and keep out of reach of small children and pets
- Do NOT use the earbuds at a high volume for any extended period
- To avoid hearing damage, use your earbuds at a comfortable, moderate volume level
- Turn the volume down on your device before placing the earbuds in/on your ears, then turn the volume up gradually until you reach a comfortable listening level
- Use caution and follow applicable laws regarding mobile phone and headphone use if using the earbuds for phone calls while driving
- Some jurisdictions impose specific limitations, such as single ear piece configuration, on the use of such products while driving
- DON'T use the earbuds for any other purpose while driving
- Focus on your safety and that of others if you use the earbuds while engaging in any activity requiring your attention, e.g., while riding a bicycle or walking in or near traffic, a construction site or railroad and follow applicable laws regarding headphone use, etc.
- Remove the earbuds or adjust your volume to ensure you can hear surrounding sounds, including alarms and warning signals
- Do NOT allow small children to use the earbuds
- Do NOT submerge or expose the earbuds for extended period to water, or wear while participating in water sports, e.g., swimming, water-skiing, surfing, etc
- To reduce the risk of injury, close supervision is necessary when the charging case is used near children
- Do not expose charging case to water, rain, liquids or snow
- Do not use the charging case in excess of its output rating
- Do not use a charging case that is damaged or modified. Damaged or modified batteries may exhibit unpredictable behaviour resulting in fire, explosion or risk of injury to persons
- Do not disassemble the charging case. Incorrect reassembly may result in risk of fire or injury to persons
- Do not open, crush, or expose a charging case to fire, or excessive temperature. Exposure to fire or temperature above 100° C may cause explosion
- Have servicing performed by a qualified repair person using only identical replacement parts.
- Do NOT make unauthorized alterations to this product
- Use this product only with an agency approved power supply which meets local regulatory requirements (e.g., RCM)
- Wipe off sweat from the earbuds and the charging case before charging
- This product contains magnetic material. Consult your physician on whether this might affect your implantable medical device
- CAUTION: Danger of explosion if battery is incorrectly replaced. Replace only with the same or equivalent type
- Battery shall not be exposed to excessive heat such as sunshine, fire or the like
- No naked flame sources such as lighted candles should be placed on the apparatus
- Excessive sound pressure from earphones and headphone can cause hearing loss
- Attention should be drawn to the environmental aspects of battery disposal
- Use only with charger base provided with the earbuds
- Use of apparatus in moderate climates

IN THE BOX

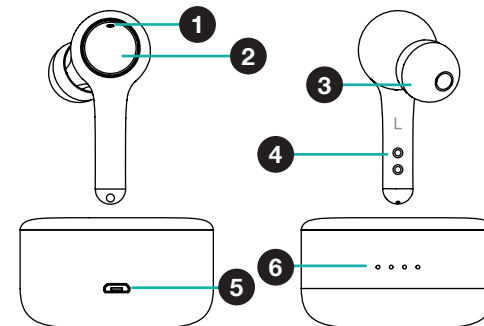
1. 1 x True Wireless Earbuds
2. 1 x Earbud Charging Case
3. 3 x Eartips (L / M / S)
4. 1 x Micro USB Charging Cable
5. 1 x Setup Guide*
6. 1 x Warranty Certificate*

*Not pictured



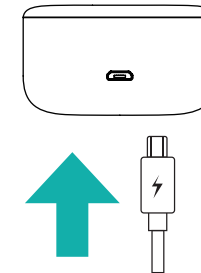
FUNCTIONS

1. LED Indicator Light
2. Multi-function Button (MFB)
3. Eartips
4. Earbuds Charging Point
5. Charging Case Charging Port
6. Charging Case LED



CHARGING (CASE)

1. Connect the micro USB end of the supplied micro USB charging cable into the charging case charging port
2. Connect the USB end of the charging cable into PC or AC/DC wall adaptor (not provided). The charging case LEDs will flash blue to indicate charging. All LEDs will turn off when charging is complete.



CHARGING (BUDS)

1. Ensure stickers are removed from the charging points on the stems of the buds.
2. Place buds into charging case. Red lights will illuminate on buds to indicate charging.



TURNING ON/OFF

Turning ON

Method 1: Open the charging case by swivelling the lid 180 degrees to the left or right. Take both earbuds out from the charging case, they will turn on and connect with each other automatically

Method 2: Whilst the earbuds are off, press and hold the multi-function button on both earbuds for 2 seconds. LEDs on both earbuds will flash blue for 1-2 seconds and you will hear a voice prompt "Power ON" from both earbuds

Turning OFF

Method 1: Put the earbuds back into the charging case and close completely, they will turn off automatically

Method 2: Whilst the earbuds are on, press and hold the multi-function button on both earbuds for 8 seconds. LEDs on both earbuds will flash red for 1-2 seconds and you will hear a voice prompt "Power OFF" from both earbuds

PAIRING

1. Take both earbuds out from the charging case, they will power on and connect with each other automatically. On first use, you will hear a voice prompt "pairing"
2. Enable Bluetooth on your device and select "HE190044" from the list to connect. You will hear a voice prompt "connected"

CONTROLS

You can control a variety of different functions on your mobile device using the smart touch controls on your earbuds. If you try move an earbud, these functions may activate. We recommend moving the earbuds using the stem part of the earbud to avoid any unnecessary activation

Play/Pause Music	Short press the multi-function button once
Volume Up	Long press the multi-function button on the right earbud (keep holding the multi-function button and the volume will keep going up, there will be a warning sound when you reach the maximum volume)
Volume Down	Long press the multi-function button on the left earbud (keep holding the multi-function button and the volume will keep going down, there will be a warning sound when you reach the lowest volume)
Next Track	Double press the multi-function button on the right earbud
Previous Track	Double press the multi-function button on the left earbud
Answer/End Call	Short press the multi-function button once
Reject Incoming Call	Press and hold the multi-function button for 2 seconds when a call is incoming
Activate Voice Assistant	Triple press the multi-function button on either earbud. Press it again to cancel
Factory Reset	The earbuds must be turned off first before resetting, quick triple press each of earbuds successively

LED INDICATOR GUIDE

Status	Description	Voice Prompt
Power On	Blue LED Flash light about 1 second	"Power On"
Power Off	Red LED Flash light about 1 second	"Power Off"
Pairing	Blue & Red LED flashes alternately on master earbud	"Pairing"
Connect	Both earbuds LEDs will turn off	"Connected"
Charging	Red LED is bright when the earphone is charging	N/A

TECH SPECS

Bluetooth version: V5.0
Music playtime: 6.5 hours
Earbud battery: 2 x 60mAh
Wireless distance: 10m
Charging case battery: 500mAh
Charging voltage: 5V

AFTER SALES SUPPORT

Phone number: 1300 663 907
customer@balcobrands.com



BAUHN®

TRUE WIRELESS EARBUDS

Warranty Details

REGISTER YOUR PURCHASE AT www.aldi.com.au/en/about-aldi/product-registration/ TO KEEP UP-TO-DATE WITH IMPORTANT PRODUCT INFORMATION

The product is guaranteed to be free from defects in workmanship and parts for a period of 12 months from the date of purchase. Defects that occur within this warranty period, under normal use and care, will be repaired, replaced or refunded at our discretion. The benefits conferred by this warranty are in addition to all rights and remedies in respect of the product that the consumer has under the Competition and Consumer Act 2010 and similar state and territory laws.

Our goods come with guarantees that cannot be excluded under the Australian Consumer Law. You are entitled to a replacement or refund for a major failure and for compensation for any other reasonably foreseeable loss or damage. You are also entitled to have the goods repaired or replaced if the goods fail to be of acceptable quality and the failure does not amount to a major failure.

AFTER SALES SUPPORT

1300 663 907

customer@balcobrands.com

MODEL: HE190044 PRODUCT CODE: 703710 12/2021



BAUHN®

TRUE WIRELESS EARBUDS

Repair and Refurbished Goods or Parts Notice

Unfortunately, from time to time, faulty products are manufactured which need to be returned to the Supplier for repair.

Please be aware that if your product is capable of retaining user-generated data (such as files stored on a computer hard drive, telephone numbers stored on a mobile telephone, songs stored on a portable media player, games saved on a games console or files stored on a USB memory stick) during the process of repair, some or all of your stored data may be lost.

We recommend you save this data elsewhere prior to sending the product for repair.

You should also be aware that rather than repairing goods, we may replace them with refurbished goods of the same type or use refurbished parts in the repair process.

Please be assured though, refurbished parts or replacements are only used where they meet ALDI's stringent quality specifications.

If at any time you feel your repair is being handled unsatisfactorily, you may escalate your complaint. Please telephone us on 1300 663 907 or write to us at:
Balco Brands Pty Ltd
PO Box 537 Bayswater Business Centre, Victoria, Australia
1300 663 907 - Hours: Mon-Fri 8:30am - 6:00pm AEST
customer@balcobrands.com

AFTER SALES SUPPORT

1300 663 907

customer@balcobrands.com

MODEL: HE190044 PRODUCT CODE: 703710 12/2021

