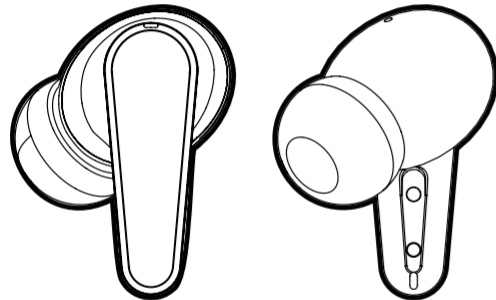


# BAUHN®

## NOISE CANCELLING TRUE WIRELESS EARBUDS



### USER GUIDE

HE210355  
06/22

### SAFETY WARNINGS

- Only use attachments/accessories specified by the manufacturer
- To avoid accidental ingestion, keep the earbuds away from children and pets
- The earbuds contain a lithium-ion battery, and may be hazardous if swallowed
- If ingested, seek immediate medical attention
- When not in use, store the earbuds in the charging case with the lid closed, and keep out of reach of children and pets
- Do NOT use the earbuds at a high volume for any extended period
- To avoid hearing damage, use your earbuds at a comfortable, moderate volume level
- Turn the volume down on your device before placing the earbuds in/on your ears, then turn the volume up gradually until you reach a comfortable listening level
- Use caution and follow applicable laws regarding mobile phone and headphone use if using the earbuds for phone calls while driving
- Some jurisdictions impose specific limitations, such as single earpiece configuration, on the use of such products while driving
- DON'T use the earbuds for any other purpose while driving
- Focus on your safety and that of others if you use the earbuds while engaging in any activity requiring your attention, e.g., while riding a bicycle or walking in or near traffic, a construction site or railroad and follow applicable laws regarding headphone use, etc.
- Remove the earbuds or adjust your volume to ensure you can hear surrounding sounds, including alarms and warning signals
- Do NOT allow children to use the earbuds
- Do NOT submerge or expose the earbuds for extended period to water, or wear while participating in water sports, e.g., swimming, water-skiing, surfing, etc
- To reduce the risk of injury, close supervision is necessary when the charging case is used near children
- Do not expose charging case to water, rain, liquids or snow
- Do not use the charging case in excess of its output rating
- Do not use a charging case that is damaged or modified. Damaged or modified batteries may exhibit unpredictable behaviour resulting in fire, explosion or risk of injury to persons
- Do not disassemble the charging case. Incorrect reassembly may result in risk of fire or injury to persons
- Do not open, crush, or expose a charging case to fire, or excessive temperature. Exposure to fire or temperature above 45°C may cause explosion
- Have servicing performed by a qualified repair person using only identical replacement parts
- Do NOT make unauthorized alterations to this product
- Use this product only with an agency approved power supply which meets local regulatory requirements (e.g., RCM)
- Wipe off sweat from the earbuds and the charging case before charging
- This product contains magnetic material. Consult your physician on whether this might affect your implantable medical device
- Excessive sound pressure from earphones and headphone can cause hearing loss
- Attention should be drawn to the environmental aspects of battery disposal
- Use only with charger base provided with the earbuds
- Use of apparatus in moderate climates
- This product shall not be connected to power supply source exceeding PS1. 5V d.c. 15W.

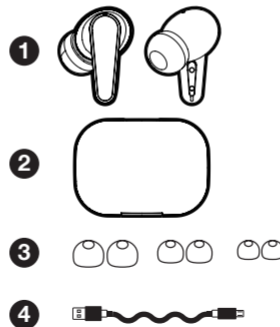
#### CAUTION: Risk of explosion:

- If the battery is replaced by an incorrect type.
- If the battery is subjected to high or low extreme temperatures that a battery can be subjected to during use, storage or transportation.
- If the battery is subjected to low air pressure at high altitude.
- Replacement of a battery with an incorrect type that can defeat a safeguard (for example, in the case of some lithium battery types).
- Disposal of a battery into fire or a hot oven, or mechanically crushing or cutting of a battery, that can result in an explosion.
- Leaving a battery in an extremely high temperature surrounding environment that can result in an explosion or the leakage of flammable liquid or gas.
- A battery subjected to extremely low air pressure that may result in an explosion or the leakage of flammable liquid or gas.

### IN THE BOX

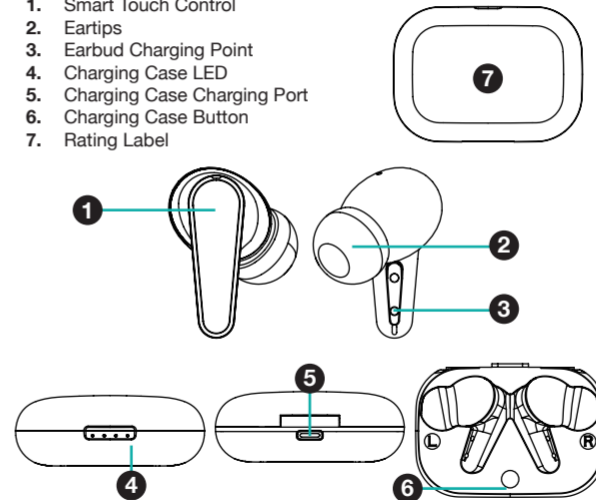
1. 1 x True Wireless Earbuds
2. 1 x Wireless Charging Case
3. 3 x Eartips (L / M / S)
4. 1 x USB-C Charging Cable
5. 1 x User Guide\*
6. 1 x Warranty Certificate\*

\*Not pictured



### FUNCTIONS

1. Smart Touch Control
2. Eartips
3. Earbud Charging Point
4. Charging Case LED
5. Charging Case Charging Port
6. Charging Case Button
7. Rating Label



### CHARGING (CASE)

The charging case can be charged using the included USB-C cable:

1. Connect the USB-C end of the cable to the outlet on the charging case. Connect the USB-A end of the cable to any USB power outlet

### WIRELESS CHARGING (CASE)

1. Place your charging case onto a compatible wireless charging device, charging will begin automatically and the battery level LED indicator lights up to indicate charging.
2. When the light on the charging case turns off, it is fully charged.

### CHARGING (EARBUDS)

1. Place the earbuds into the charging case. The first and fourth lights on the charging case will illuminate for 1 second to indicating the two buds are charging.

## TURNING ON/OFF

### Turning on

**Method 1:** Open the charging case, take one or both earbuds from the case. They will automatically connect with the last paired device

**Method 2:** Press and hold on the earbud for 5 seconds

### Turning off

**Method 1:** Insert the earbuds into the charging case and close the case. The earbuds will disconnect from your previously paired device and start charging

**Method 2:** Press and hold on the earbud for 5 seconds

## PAIRING

1. Remove the earbuds from the charging case and insert into your ears
2. Your earbuds will automatically enter pairing mode
3. Open Bluetooth settings on your device and select **HE210355** from the list to connect
4. Audio from your device will now play through the earbuds

## CONTROLS

You can control a variety of different functions on your mobile device using the smart touch controls on your earbuds. If you try to move or adjust an earbud, these functions may activate. We recommend moving the earbuds using the stem part of the earbud to avoid any unnecessary activation

<b>Play/Pause Music</b>	Tap either earbud
<b>Next Song</b>	Double tap left earbud
<b>Previous Song</b>	Triple tap left earbud
<b>Answer/End Call</b>	Tap either earbud
<b>Reject Incoming Call</b>	Hold down the left or right earbuds for 2 seconds
<b>Activate Voice Assistant</b>	Double tap the right earbud
<b>Turn Earbud on/off</b>	Press and hold either earbud for 5 seconds to turn off/on the bud. Pairing will begin automatically when the buds are turned on.
<b>Active Noise Cancelling / Transparency Mode</b>	Long press either earbud to cycle between noise cancelling mode, transparency mode and transparency off

## CHARGING CASE LED INDICATOR

LED indicator display	Charge level
○ ○ ○ ○	0%
☀ ○ ○ ○	0-25%
☀ ☀ ○ ○	25-50%
☀ ☀ ☀ ○	50-75%
☀ ☀ ☀ ☀	75-100%
● ● ● ●	100%

## TECH SPECS

Bluetooth Version: 5.2  
Playtime: Up to 9 hours with normal use  
Over 7 hours with ANC  
Earbud battery: 2 x 65mAh  
Charging Case: 650mAh  
Wireless Distance: 10m  
Active Noise Cancelling up to: 30dB±2dB



**BAUHN**

**NOISE CANCELLING TRUE WIRELESS EARBUDS**

### Warranty Details

REGISTER YOUR PURCHASE AT [www.aldi.com.au/en/about-aldi/product-registration/](http://www.aldi.com.au/en/about-aldi/product-registration/) TO KEEP UP-TO-DATE WITH IMPORTANT PRODUCT INFORMATION

The product is guaranteed to be free from defects in workmanship and parts for a period of 12 months from the date of purchase. Defects that occur within this warranty period, under normal use and care, will be repaired, replaced or refunded at our discretion. The benefits conferred by this warranty are in addition to all rights and remedies in respect of the product that the consumer has under the Competition and Consumer Act 2010 and similar state and territory laws.

Our goods come with guarantees that cannot be excluded under the Australian Consumer Law. You are entitled to a replacement or refund for a major failure and for compensation for any other reasonably foreseeable loss or damage. You are also entitled to have the goods repaired or replaced if the goods fail to be of acceptable quality and the failure does not amount to a major failure.

**AFTER SALES SUPPORT**  
☎ 1300 663 907

customercare@balcobrands.com  
MODEL: HE210355 PRODUCT CODE: 709469 06/2022



**BAUHN**

**NOISE CANCELLING TRUE WIRELESS EARBUDS**

### Repair and Refurbished Goods or Parts Notice

Unfortunately, from time to time, faulty products are manufactured which need to be returned to the Supplier for repair.

Please be aware that if your product is capable of retaining user-generated data (such as files stored on a computer hard drive, telephone numbers stored on a mobile telephone, songs stored on a portable media player, games saved on a games console or files stored on a USB memory stick) during the process of repair, some or all of your stored data may be lost.

**We recommend you save this data elsewhere prior to sending the product for repair.**

You should also be aware that rather than repairing goods, we may replace them with refurbished goods of the same type or use refurbished parts in the repair process.

**Please be assured though, refurbished parts or replacements are only used where they meet ALDI's stringent quality specifications.**

If at any time you feel your repair is being handled unsatisfactorily, you may escalate your complaint. Please telephone us on 1300 663 907 or write to us at:  
Balco Brands Pty Ltd  
PO Box 537 Bayswater Business Centre, Victoria, Australia  
1300 663 907 - Hours: Mon-Fri 8:30am - 6:00pm AEST  
customercare@balcobrands.com

**AFTER SALES SUPPORT**  
☎ 1300 663 907

customercare@balcobrands.com  
MODEL: HE210355 PRODUCT CODE: 709469 06/2022

