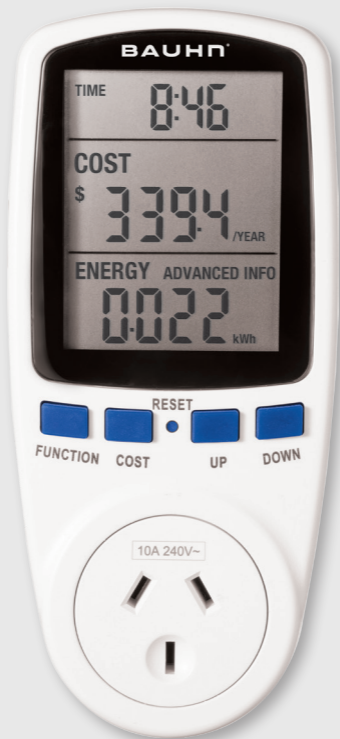


# BAUHN®



## USER GUIDE POWER METER

CE220653 | 06/2024



V1.0



## Safety Instructions

To ensure proper operation of this device, please read this user guide carefully before using the device and keep it for further reference.

- Read this manual thoroughly before first use and keep it in a safe place for future reference, along with purchase receipt and packaging. The safety precautions enclosed herein reduce the risk of fire, electric shock and injury when correctly adhered to.
- This product is intended for indoor domestic use and is not intended for commercial, trade or industrial applications.
- This appliance is not intended for use by persons (including children) with reduced physical, sensory or mental capabilities, or lack of experience and knowledge, unless they have been given supervision or instruction concerning use of the appliance by a person responsible for their safety. Children should be supervised to ensure that they do not play with the appliance. Always read all instructions before using the appliance.
- Do not drop the appliance. Dropping or rough use of the unit may cause damage.
- Do not place near strong magnets or strong electric currents.
- Do not attempt to repair, open or alter any components of the appliance. In the case of improper usage or if you have opened, altered and repaired the product yourself, all guarantees are void.
- The supplier does not accept responsibility for additional or consequential damage other than covered by legal product responsibility.
- Do not use the appliance for other than intended or specified purposes.
- The supplier is not responsible for the end use of this product including any improper use or when used for purposes that are not specified.
- Do not expose this product to water, rain, moisture or dust. Electronic products of this kind should never be subjected to moisture or extreme temperatures.
- Do not attempt to open the product housing. There are no user-serviceable parts inside this product.
- Supervise young children to ensure they do not play with the product.
- Do not expose to water, dust, moisture, chemicals, oils, or other liquids.
- Do not expose to naked flames or other heat sources.
- Do not drop or subject the device to undue shock.
- Keep device away from magnets at all times.
- Keep away from direct sunlight. Indoor use only.
- Unplug this device during lightning storms or when unused for long periods of time.



**BAUHN®**

**POWER METER**

# Warranty Details

---

**REGISTER YOUR PURCHASE AT**  
[www.aldi.com.au/en/about-aldi/product-registration/](http://www.aldi.com.au/en/about-aldi/product-registration/)  
**TO KEEP UP-TO-DATE WITH IMPORTANT PRODUCT INFORMATION**

---

The product is guaranteed to be free from defects in workmanship and parts for a period of 12 months from the date of purchase. Defects that occur within this warranty period, under normal use and care, will be repaired, replaced or refunded at our discretion. The benefits conferred by this warranty are in addition to all rights and remedies in respect of the product that the consumer has under the Competition and Consumer Act 2010 and similar state and territory laws.

Our goods come with guarantees that cannot be excluded under the Australian Consumer Law. You are entitled to a replacement or refund for a major failure and for compensation for any other reasonably foreseeable loss or damage.

You are also entitled to have the goods repaired or replaced if the goods fail to be of acceptable quality and the failure does not amount to a major failure.

---

## AFTER SALES SUPPORT

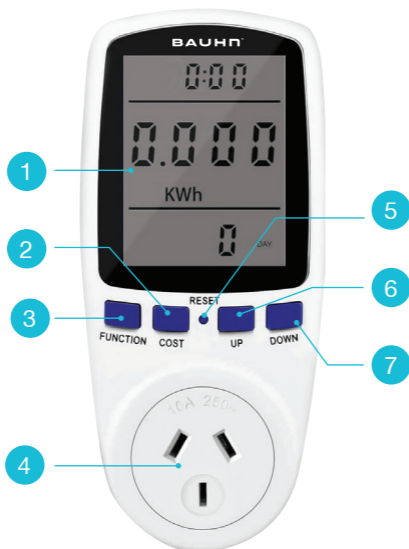
  1300 663 907

 [customercare@balcobrands.com](mailto:customercare@balcobrands.com)

MODEL: CE220653 PRODUCT CODE: 716478 06/2024



# Product Overview



1. Display
2. Cost button
3. Function button
4. Power socket
5. Reset button
6. Up button
7. Down button
8. User guide\*

\*Not shown

## Technical Specifications

Operating voltage: 240V, 50Hz  
Operating current: Max 10A

## Display Range

Time: 0 second - 9999 days  
Power: 0W - 9999W  
Voltage: 0.0V - 9999V  
Current: 0.000A - 9999A  
Frequency: 0Hz - 99Hz  
Price: 0.00 cost/KWh - 99.99 cost/KWh  
Energy: 0.000KWh - 9999KWh  
Cost: 0.00cost - 9999cost

## Features

- Measure Volt, Amp, Watt, Hz, PF
- Record total running time
- Current time display
- 5 currency options
- Double tariff input
- Large LCD display

---

# Contents

<b>Safety Instructions</b> .....	<b>3</b>
<b>Product Overview</b> .....	<b>5</b>
<b>Technical Specifications</b> .....	<b>6</b>
<b>Display Range</b> .....	<b>6</b>
<b>Features</b> .....	<b>6</b>
<b>Getting Started</b> .....	<b>8</b>
Safety Use & Care.....	8
Resetting.....	8
Display.....	8
Connecting Appliances.....	8
Time.....	9
Setting the time.....	9
Tariffs/Costs.....	10
Setting the tariff (Single tariff).....	10
Setting the tariff (Dual tariff).....	11

# Getting Started

## Safety Use & Care

- Please keep this manual in a safe place for future reference
- Prior to use, please plug the Power Monitoring Plug into wall outlet to charge the internal battery for about 30 minutes
- DO NOT use with any appliance where the load exceeds 16 Amps
- DO NOT attempt to repair, disassemble or modify under any circumstances

## Resetting

- To reset the Power Monitoring Plug, press the reset button with a small object until the screen flashes

## Display

- **TIME:** normal real time clock in 24 hours mode, press UP or DOWN to show total running time
- **COST:** press COST button to switch between showing power cost in last day / year / total
- **ENERGY:** press FUNCTION button to switch between showing real time Watt / kWh / Volt / Amp / Hz / PF / Max WATTS

## Connecting Appliances

- Set the time, currency, and tariff cost before use
- Plug the Power Monitoring Plug into the mains socket.
- Plug the appliance you wish to monitor into the front socket of the Power Monitoring Plug
- Switch the mains socket power switch to "ON"
- Use the appliance as normal - the power meter will now monitor the energy used by the appliance

## Time

- Time is always displayed using the 24hr clock, so 2:00pm must be entered 14:00 for correct operation
- The device displays a normal real time clock in 24 hours mode
- Press UP or DOWN to switch between clock and total running time

## Setting the time

- Press and hold the UP button to enter time set-up
- Press FUNCTION button to select which time digit you need to change
- Press UP or DOWN button to set the digit
- Press FUNCTION to cycle to other digits until all are set
- Press COST to set the final time and close the setting screen

## Tariffs/Costs

- There are 5 currencies that you can choose to have your charges display as:
  - \$ – Dollars
  - £ – Pounds
  - € – Euro
  - Kr – Krona
  - R – Rand
- The Power Monitoring Plug can function in single or dual tariff mode
- Dual tariff mode you can have 2 different tariff rates for 2 periods of the day. This is useful if you have a peak and off-peak energy billing system
- Press COST button to switch between showing power cost in last day / year / total
- The cost that needs to be entered is your current rates. These can be found online or on your latest bill.

## Setting the tariff (Single tariff)

- Press any button to turn on the screen
- Press and hold the COST button for 3 seconds, the currency symbol will begin to flash
- Press UP or DOWN button to toggle between currency options, then press the COST button to select
- Press UP or DOWN button to choose TARIFF 1 and press COST button to set
- Press UP or DOWN button to set the digit
- Press COST button to move next digit and repeat the process until you have entered each digit
- Press COST button once all digits are filled to set the final tariff cost

## Setting the tariff (Dual tariff)

- Press any button to turn on the screen
- Press and hold the COST button for 3 seconds, the currency symbol will begin to flash
- Press UP or DOWN button to toggle between currency options, then press the COST button to select
- Press UP or DOWN button to choose DUAL TARIFF and press COST button to set
- Press UP or DOWN button to set the start time for TARIFF 1, then press COST button to move next digit, repeat until all digits in the time are set and then press the COST button to set the final tariff start time
- Repeat the above process to set start time for TARIFF 2
- Next set the cost for TARIFF 1, press UP or DOWN button to set the digit
- Press COST button to move next digit and repeat the process until you have entered each digit
- Press COST button once all digits are filled to set the final TARIFF 1 cost
- Repeat the process to set the cost for TARIFF 2
- Press COST button once all digits are filled to set the final tariff cost



**BAUHN®**

**POWER METER**

# Repair and Refurbished Goods or Parts Notice

Unfortunately, from time to time, faulty products are manufactured which need to be returned to the Supplier for repair.

Please be aware that if your product is capable of retaining user-generated data (such as files stored on a computer hard drive, telephone numbers stored on a mobile telephone, songs stored on a portable media player, games saved on a games console or files stored on a USB memory stick) during the process of repair, some or all of your stored data may be lost.

**We recommend you save this data elsewhere prior to sending the product for repair.**

You should also be aware that rather than repairing goods, we may replace them with refurbished goods of the same type or use refurbished parts in the repair process.

**Please be assured though, refurbished parts or replacements are only used where they meet ALDI's stringent quality specifications.**

If at any time you feel your repair is being handled unsatisfactorily, you may escalate your complaint. Please telephone us on 1300 663 907 or write to us at:

Balco Brands Pty Ltd

PO Box 537 Bayswater Business Centre, Victoria, Australia

1300 663 907 - Hours: Mon-Fri 8:30am - 6:00pm AEST

customer@balcobrands.com

---

## AFTER SALES SUPPORT

  1300 663 907

 [customer@balcobrands.com](mailto:customer@balcobrands.com)

MODEL: CE220653 PRODUCT CODE: 716478 06/2024





**BAUHN®**